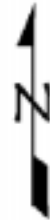
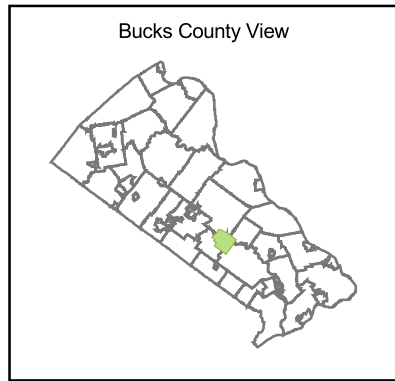


Forks of the Neshaminy

Bucks County, PA

- First Priority Area (~1330 acres)
- Second Priority Area (~1120 acres)
- Heritage Conservancy Preserved Land
- Other Preserved Land
- Parcel Boundary
- Open Water
- Streams
- Municipal Boundary
- Road
- Potential National Historic Registry*
- Locally Significant Historic Resource*

* Potential National Register historic sites and locally significant historic sites were determined as a result of a visual survey conducted by Heritage Conservancy.

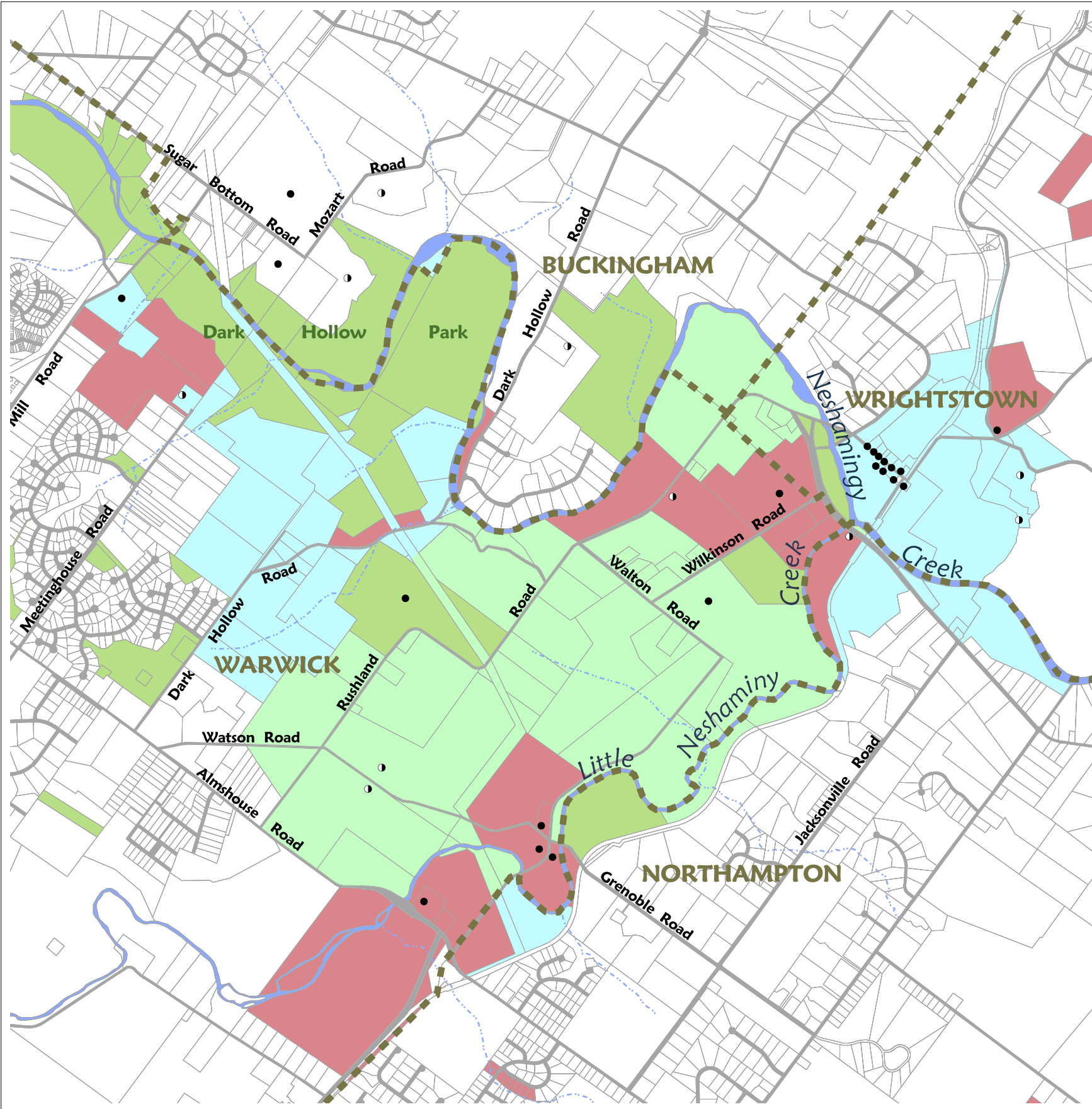


0 2000 4000 Feet

January 2005



Heritage Conservancy
85 Old Dublin Pike
Doylestown, Pa 18901
215-345-7020
www.heritageconservancy.org



View of Little Neshaminy from the Tomlinson Property

The Forks of the Neshaminy

.....is so called because of the narrow, winding stream valleys formed by the juncture of the Neshaminy and Little Neshaminy Creeks. This watershed, located in the Pennsylvania municipalities of Warwick; Wrightstown; Buckingham; and Northampton, is approximately 5,600 acres and was recently recognized in the Natural Areas Inventory of Bucks County as an area containing significant natural features which should receive priority for protection. The natural area includes the forested slopes and floodplain along the Little Neshaminy and Neshaminy Creeks near Rushland. This region is also made up of a group of farms united by Neshaminy Creek and due to topography, form a visually distinct area that still reflects its agricultural heritage.

View of farmland from the Wilkinson Property

