

# 2015 Annual Report



**DOCUMENTING  
OUR HISTORIC  
STRUCTURES**

3

**ALDIE MANSION  
IS GETTING A  
FACELIFT!**

4

**CALVIN RUTH:  
A LASTING LEGACY**

5

**HERITAGE  
CONSERVANCY  
AND DOW  
PRESERVE  
CROYDON WOODS**

6

**PRESERVED:  
A KEYSTONE  
IN A 350-ACRE  
GREENWAY**

7

**CONNECTING OUR  
COMMUNITY TO  
OUR NATURAL  
AND HISTORIC  
HERITAGE**

8

**BRISTOL MARSH  
VIRTUAL TOUR**

11

**OUR SUPPORTERS**

12

To preserve and protect our natural and historic heritage

# From the Leadership Team



Dear Friends,

When we began discussions more than three years ago about acquiring a more than 80-acre property in Bristol Township, we had hope that it would come to fruition, but we understood that everything would have to fall perfectly into place in order to finalize this acquisition. We can spend years on a project only to have it fall through weeks before settlement; it's just the nature of our work.

There were a lot of hurdles to get over during these past few years, but our staff worked tirelessly on the project because they understood its importance. Right up until settlement day on December 30, 2015, we couldn't be sure that everything would align. But we had hope, and hope perseveres.

We are thrilled to share that the Croydon Woods acquisition is complete. This 80-acre wooded wetland forest is protected in perpetuity for the enjoyment of generations to come.

Protecting this large green space, which is located in a mostly urbanized setting, is a proud organizational accomplishment. Sometimes we can get caught up in the numbers, but in reality, just one acre of preserved green space can make all the difference to a community of people who live in an area where land has been overtaken by development.

We all deserve to have access to green space. Open space is not a luxury but a necessity for our well being. Heritage Conservancy strives to connect people with nature because it makes for a happier, stronger community.

As you read through this year's report, you'll see many of your fellow compassionate conservationists who have joined us at an event to connect with open spaces and historic places. We hope that you'll join us at one in 2016 to enjoy the rich natural and historic heritage that our fine region has to offer!

Sincerely,

Jeffrey L. Marshall  
President

Linda Cacossa  
Chief Operating Officer

*P.S. – On page 6, you can read the full story about our Croydon Woods acquisition and all of the community and corporate support that went into it.*

## Supporters Corner What you're saying about Heritage Conservancy

"I'm a current member and got interested in joining when I'd see Heritage Conservancy signs on preserved property lining the Delaware Canal Path. I'm always so thankful whenever I see your signs on preserved land. I realize how much it benefits all of us to have land protected from development."

— Heritage Conservancy member Heather Bernhardt  
New Britain, PA

"Thank you for helping to maintain the peace and tranquility of our beautiful county."

— Heritage Conservancy member Mark Rubin  
Washington Crossing, PA

"It's time for me to do my part."

— Heritage Conservancy member  
and volunteer Ann Bamford  
Mechanicsville, PA

# Documenting Our Historic Structures



A documented home from Abington Township

With assistance from the Pennsylvania Historical & Museum Commission, the Bureau for Historic Preservation (PHMC/BHP), the Township Planning Commissions, and local volunteers, Heritage Conservancy has begun conducting inventories of historic buildings in Abington and Lower Frederick Townships, Montgomery County, for a Historic Resources Survey (HRS) Project.

Both townships were founded in the early 1700s and are rich with history. Abington Township is home to some of the county's oldest buildings and transportation routes, and Lower Frederick Township has strong agricultural ties. The HRS Project will identify and document each community's historic resources in order to increase public awareness of them, which is essential in promoting their protection.



A documented home from Lower Frederick Township

The HRS process is performed primarily by volunteers, and it includes gathering data on resources through research using public records, historic maps and written material, and field surveys. In their fieldwork, volunteers travel on public roads to photograph and record information on buildings, including their historic and current functions, their architectural styles (Colonial, Early Republican, Mid-19th Century, Late Victorian, etc.), and their exterior materials.

The purpose of the survey is to gather relevant facts about properties as a way of understanding the age, nature, and location of historic places. Once completed, the information will be compiled and utilized to document our past as a snapshot in time and to prioritize resources for continued preservation and enhancement. It may also be used to direct future studies, inform planning processes, and make decisions about development activities that might affect those resources.

According to Mary Lou McFarland, Senior Preservation Specialist at Heritage Conservancy, "It is important that we recognize the irreplaceable historic resources that make each community unique. Surveys help to educate the public and provide a framework to encourage preservation for future generations."

**If you are interested in the history of our community and your neighborhood, we invite you to join up with other community members and be a part of documenting history. Reach out to us at 215-345-7020 for more information.**

## TAKE A LOOK AT THE NUMBERS FOR 2015

**550+ AMPHIBIANS**  
...were provided safe passage across busy roads thanks to the Quakertown Swamp Amphibian Rescue Partnership



**150+ VOLUNTEERS**  
...participated at 13 property stewardship and cleanup days



**1,500+ MEMBERS**  
...of our community joined us at an engagement event to connect with our region's natural and historic heritage



**600+ BATS**  
...were counted at 8 different summer maternal roost sites to monitor important bat populations



**150+ ACRES** of land  
... were preserved in 2015, adding to 13,500+ acres of preserved land facilitated by Heritage Conservancy



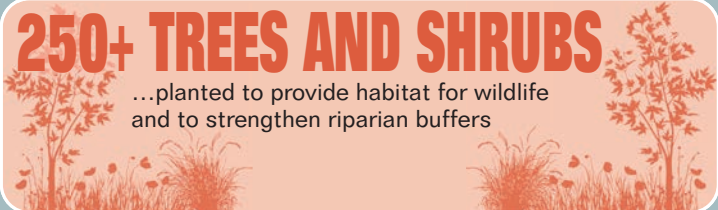
**2 MILES**  
...of nature trails improved



**60+ BAGS**  
...of litter removed from important natural resources



**250+ TREES AND SHRUBS**  
...planted to provide habitat for wildlife and to strengthen riparian buffers





# Appreciating Our Business Members

Business members who have supported Heritage Conservancy for more than 20 years.

In April, Heritage Conservancy hosted more than 100 business members (one of our largest turnouts to date!) at its annual Business Members Reception. Held here at Aldie Mansion, the event celebrated our much-appreciated business members who continue to promote our mission of preserving and protecting our region's natural and historic heritage through their advocacy and support.

Heritage Conservancy began its business membership program in 1990, and since 2015 marked a milestone year, we had much to celebrate and give thanks for.

The 2015 Community Business Leader of the Year Award was presented to Jeff and Ada Staal Smith, owners of J.A. Heating and Air Conditioning of Warminster, PA, for their commitment to furthering our mission and their significant contributions to our community.

Along with the Smiths, we honored our longest-tenured business members who have steadfastly and continuously contributed to our mission for 20 years or more. Those businesses include:

- First National Bank and Trust Company of Newtown

- Keystone Tree Experts
- Fredendall Building Company
- Callaghan Interior Design
- QNB Bank
- Jeffrey A. Miller Catering Company
- J. Carroll Molloy, Realtor
- Advanced Color Signs & Graphics
- Brooks and Barber Tree Management
- First Savings Banking – Insurance – Investments

We were grateful to have this opportunity to honor all of these businesses and to thank so many of our business members in person.

**If you're interested in learning more about a Heritage Conservancy business membership, contact us at 215-345-7020.**



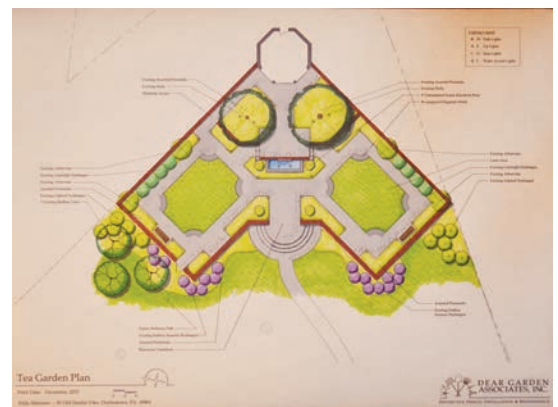
Jeff and Ada, recipients of the 2015 Community Business Leader of the Year Award, along with our Chairman of the Board, Chris Chandor.

## Aldie Mansion is getting a facelift!

Thanks to the generosity of Nelson and Bette Pfundt and the Pfundt Family Foundation, we broke ground at the end of 2015 on the renovation of Aldie Mansion's Tea Garden, a treasure many of you have never seen since it is in the backyard of the mansion. Dear Garden Associates, Inc. designed a plan that will enhance this original, integral part of the mansion's landscape while preserving its historic integrity. Through adaptive reuse, a fountain will become a focal point for the Pfundt Family Foundation Tea Garden by incorporating an original lion's head pool spout that William Mercer created using concrete and tile. By adding an area for chairs and tables with accessibility for everyone, the Pfundt Family Foundation Tea Garden will accommodate events and ceremonies.

Along with the renovations to the Tea Garden, we will begin work on installing a new ballroom floor. Thanks to generous supporters at Christmas at Aldie 2015, we have the funding to do so. As you can imagine, Aldie Mansion's ballroom floor gets a lot of wear and tear, and it hasn't been replaced since the ballroom was first added onto the mansion more than

seventeen years ago. The ballroom was originally built to allow for special events to generate revenue and make the building self-sustaining.



Both of these renovations will increase revenue capabilities, which in turn benefits Heritage Conservancy's mission of preserving and protecting our natural and historic heritage.

**We hope that you will come visit us for a guided tour of Aldie Mansion during one of our newly scheduled open houses, or contact us at 215-345-7020 to schedule a private tour.**

To preserve and protect our natural and historic heritage

# Calvin Ruth: A Lasting Legacy

On an ordinary day in April 1990, an unassuming man in his late-60s walked into our Aldie Mansion headquarters to inquire about the building's past.

At this time, Aldie Mansion had just recently been rehabilitated after falling into a state of disrepair, and it drew a good deal of community interest. An employee named Jeff Marshall (that's right, our current President!) greeted Calvin H. Ruth, a lifelong resident of Quakertown, PA, and gave him a tour of the mansion, thus establishing a friendship with our organization that lasted the rest of his lifetime.

A quiet man, Calvin Ruth's thoughts were heard clearly through his art. An art teacher by profession and an artist and collector for the pure joy of it, Mr. Ruth captured the beauty and spirit of upper Bucks and Montgomery Counties through his impressionist landscape paintings. He had a keen eye for painting old farmhouses, barns, and historic buildings, and he would often paint the same one at different times of the year. It was his way of documenting and appreciating our countryside.

His appreciation went even further than this documentation. Calvin Ruth was a true steward of our area's history and environment. After learning more about

Heritage Conservancy, he developed a fondness for our Quakertown Swamp Preserve. Because of his passion for the swamp, he contributed yearly to its protection and other properties like it.

"It's such a natural connection for artists like Calvin Ruth to appreciate Heritage Conservancy's work," reflected Jeff Marshall on Mr. Ruth's dedication to our mission. "Our role is to ensure that the beauty an artist has captured remains intact for everyone to enjoy in person."

When Mr. Ruth passed away in February 2015 at the age of 93, he left a planned gift to our organization. The Calvin Ruth Memorial Fund was established to help Heritage Conservancy meet its mission of historic preservation and land conservation, specifically in five upper Bucks County municipalities.

A strong component of the Calvin Ruth Memorial Fund will focus on educational activities, a role he dedicated his life to; his gift will also go toward protecting the areas that meant so much to him. Combining his passion for education and the Quakertown



Swamp, a portion of his fund will go toward our upcoming Quakertown Swamp BioBlitz in May 2016 to help us better understand this important natural resource.

Combining his lifetime gifts along with his planned gift, Mr. Ruth donated nearly \$1.3 million dollars to Heritage Conservancy. Mr. Ruth was careful and intentional with his savings, and as such, Heritage Conservancy will optimize his gift by extending its reach to make the largest impact. The legacy that he left will be felt for generations to come. Thank you for your lasting gift, Mr. Ruth.

## The Seven Year Itch

Photo credit: Art for Conservation

For the seventh year in a row, Heritage Conservancy partnered with the Artists of the Gallows Run and other community members to transform the iconic barn of Rising Sun Farm in Kintnersville, PA, into "Art for Conservation," a weekend-long gallery of exceptional works of art that highlight the picturesque views of upper Bucks County. Held in October, this art show was a true celebration of the heritage of our area.

With fifty-percent of profits being donated by the artists to support land conservation efforts

in Nockamixon Township, the show raised more than \$6,500 toward the cause. Extending Art for Conservation's impact in the area even further, the money raised by the art show was matched by funds from the Calvin Ruth Memorial Fund. As an art teacher, Calvin Ruth would have especially enjoyed the art show's engagement of the next generation—Palisades High School AP art students were invited to participate in the Future Artists of the Gallows Run, a juried competition organized to encourage young artists.



# Preserving and protecting our n

As 2015 was coming to a close, our organization was finalizing a land acquisition project that was three years in the making.

## Heritage Conservancy Acquires Croydon Woods in Bristol Township

We are thrilled to announce that at the end of December, Heritage Conservancy acquired Croydon Woods, a more than 80-acre parcel of land that is situated in Bristol Township, PA, from Rohm and Haas Company, a wholly owned subsidiary of The Dow Chemical Company. Croydon Woods is one of the last remaining wooded wetland forests in the region, and thanks in part to support from Bucks County, the Pennsylvania Department of Conservation and Natural Resources, and the William Penn Foundation, it will now remain green space in perpetuity.

Combined with an adjacent 32 acres of protected woodlands, the acquisition of Croydon Woods will provide public access for passive recreation on more than 112 acres of natural habitat in an otherwise urban setting.

"Heritage Conservancy is tremendously excited to preserve land in the more developed portion of Bucks County," said Jeffrey L. Marshall, President of Heritage Conservancy. "Croydon Woods is an island of green, and the environmental, economic and emotional benefits of living near open space has been well documented."

As a vibrant, flourishing ecosystem, the Bucks County Natural Areas Inventory (NAI) identified Croydon Woods as a "Priority 1" site of statewide and countywide significance. The NAI describes the tract as an excellent example

of coastal floodplain. Preservation of these wooded areas is vital for replenishing groundwater resources and absorbing and filtering storm water runoff. The property also contains endangered and threatened plant species that will now have a permanently protected habitat in which to thrive.

Our goal for Croydon Woods is for it to remain an undisturbed nature preserve that will provide habitat for rare and endangered plant species as well as permanent open space for the public. Our organization will perform a complete inventory and assessment of the property's natural resources and develop a management and stewardship plan to protect the land and its ecosystem. In addition, opportunities to further incorporate passive recreation and environmental education at the property without negatively impacting the sensitive natural areas will be explored.

Heritage Conservancy has successfully worked with local schools to provide hands-on, outdoor learning experiences at the nearby Bristol Marsh. Similarly, our organization will use its expertise and community partnerships to encourage the use of Croydon Woods for the enjoyment of community members near and far. As we further explore the property and begin to understand its natural resources more fully, we will keep the community informed of our progress and findings.

## Preserved: A 70-acre farm in Durham Township

Because of its prime agricultural soils and active farming, Dave Caccavo's 70-acre property in Durham Township was a high-priority preservation project. With Heritage Conservancy facilitating the transaction, the Bucks County Agricultural Preservation Program purchased a conservation easement on the Caccavo Farm to protect it in perpetuity.

A lifelong New Yorker, Mr. Caccavo "found" Bucks County almost thirty years ago on trips to visit his

sister, who lived outside of Washington Crossing. He holds a strong affinity for open space, and he understands its importance. By preserving this piece of his farm, he is ensuring that the Bucks County he discovered three decades ago is the same Bucks County that will be found by future generations.

Mr. Caccavo is interested in continuing the conservation conversation and is in talks with Heritage Conservancy to preserve additional land.

To preserve and protect our natural and historic heritage

# natural and historic heritage

## Preserved: A Keystone in a 350-Acre Greenway in Upper Bucks County

We had a busy end of December! Around the same time as our Croydon Woods acquisition, we were closing on the preservation of another property, this time at the opposite end of the county in upper Bucks County.

The Wernett property, a 17-acre working farm that is also known as Sunrise Farm and is located in Springfield Township, will now be protected in perpetuity thanks to the combined efforts of Heritage Conservancy and Springfield Township. Funding for the project was provided by Springfield Township and the Bucks County Municipal Open Space Program. Heritage Conservancy will hold the conservation easement on Sunrise Farm and keep the promise to protect it in perpetuity.

After preserving 29 acres of their property with Heritage Conservancy and Richland Township back in 2011, Monty and Bonnie Wernett had preservation fever! With a sense of humor, Monty shared with us that the process does take time and you do need to have patience, but it is worth it in the end. That's why he decided to do it again.

Filled with fond memories of raising pigs on Sunrise Farm and gratitude for how good the land has been to his family, Monty has spent the majority of his life appreciating the beauty of his land and all that it provides to the community.

"As much joy as we get when we drive by and see this vast landscape, we wanted other people to enjoy it and have that same feeling generations from now," said Monty Wernett.

For more than 40 years, the Wernetts have farmed their 17-acre property on California Road in Springfield Township, which is adjacent to the first property they preserved in Richland Township. Heritage Conservancy was aware that the Wernetts were interested in preserving the piece in Springfield Township as well, so acting as a facilitator, our organization approached the Township about this property that would connect the two

townships and add to a 350-acre greenway of contiguous protected lands. Because of its location that contributes to a beautiful vista and scenic viewscape, and because the land contains prime agricultural soils that are important for agricultural production, the Wernetts' property at Sunrise Farm was considered a high-priority preservation project for Springfield Township.

"Our neighboring township, Richland Township, had already preserved a majority of the property. So when we (Springfield Township) had the opportunity to preserve the portion of this property in our township, we quickly moved the project forward," said Pete Sleeman, Springfield Township Open Space Committee Chairman. "Heritage Conservancy and a willing property owner made the project a seamless and enjoyable experience."

"Heritage Conservancy liaisons to link landowners, partners, and townships together to preserve large, contiguous areas of our important natural resources and landscapes," said Laura Baird, Senior Land Conservationist for Heritage Conservancy who worked directly on this project. "It's these strong partnerships that allow us to accomplish important preservation successes like the Wernett farm."

After going through the preservation process twice and ultimately protecting two farms, Monty is a seasoned preservationist and a champion of protecting our green spaces.

"It's this generation that has to step up to the plate and protect our lands," said Monty. "There's a window for preservation open and it has an urgent timeframe before it closes. We need other farms to act now."

We are thankful for the Wernetts' foresight. Our community will forever benefit as a result of their compassionate act to preserve Sunrise Farm in perpetuity.

# Connecting The Community to O

On Arbor Day in April, Heritage Conservancy ► staff members and employee volunteers from GlaxoSmithKline (GSK) planted over 100 trees and shrubs on our Baker Preserve, a property located in upper Bucks County that contains a portion of Cooks Creek. Thanks to the TreeVitalize Watershed Grant Program administered by the Bucks County Conservation District, we had the funding to purchase over ten species of native trees and shrubs from ArcheWild for planting. The nonnative ground cover on the preserve is very dense, making it difficult for trees to reseed themselves. The TreeVitalize plantings will help to repopulate the area, which will in turn help to prevent stream bank erosion and improve water



quality. The day highlighted an excellent example of collaborative stewardship. It takes the teamwork of a caring community to steward and protect our important natural resources.



▲ In honor of National Trails Day in June, compassionate volunteers from the community, including employees from Lockheed Martin, helped us with a cleanup of the Jere Knight Trail located on our Fuller Preserve in Springfield Township, Bucks County. We improved the trailhead by installing stone steps to allow for easier access and by clearing the trail of debris and fallen branches. Thank you to the volunteers who helped us to accomplish this task!

In April, students from Delaware Valley University ► participated in a cleanup to remove trash from our Bellwood Preserve in Northampton Township. This 100-acre property consists of wooded area, open space, and a portion of Mill Creek, and it features a diverse ecosystem with abundant plant and animal life. The students collected more than 10 bags full of trash that had been littering the property. The ecosystem thanks these students for helping it to thrive!



◀ Over the course of the summer, we hosted **Concert in the Garden** here at Aldie Mansion. The heritage of the mansion served as the backdrop for musical performances showcased that we have right here in our community. More than 500 people of all ages joined in to soak up a bit of the sun as music emanated throughout the garden. Our organization adaptively reuses Aldie Mansion headquarters to safeguard the mansion and landscape for the benefit of the community; we were pleased to host this event free to the public thanks to donor support.



To preserve and protect our natural and historic heritage



# Our Natural and Historic Heritage

On a snowy evening in February, we held a moonlit hike at our Hart's Woods Preserve in Doylestown. Despite low temperatures, the group merrily strolled throughout the forest while learning about different species of plant life (there are 200-year-old tulip poplar trees in Hart's Woods—they can grow to be 150 feet in height!) and animal life that inhabit the forest. The snow on the ground made it easier to spot animal tracks, and everyone enthusiastically worked together to identify them.

In October, we hosted a field trip at the Bristol Marsh Nature Preserve for students from the Commonwealth Connections Academy.

While discovering the plant and animal life of the marsh, the students also learned about the impact of pollution on the environment. It was an exciting day of learning about an important natural resource and our impact on its ecosystem! This program took place thanks in part to a grant from PA DEP Coastal Zone Management. ▶

...e  
...rts in  
...sion. While  
...as a backdrop,  
...the local talent  
...community. More  
...ed us with lawn  
...e mansion's history  
...the gardens. Our  
...ie Mansion as its  
...nsion's history  
...the entire  
...offer this  
...nks to



◀ This summer, we hosted three different fundraising dinners, and each one had its own way of connecting its guests to the natural and historic heritage of the Bucks and Montgomery County region. History at the Haines featured a historic homestead on the National Register of Historic Places that housed a museum of artifacts and antique cars; Farm to Table strengthened the connection between local agriculture and the need to preserve our vital farmland; Celebration for Conservation highlighted the importance of community partnerships in protecting our natural and historic treasures. More than 500 of you connected with us on these properties. We were thrilled to share them with you and show why our work is so important!

# Connecting Our Community to Our Natural and Historic Heritage

In May, we had the privilege of engaging a group from the Empower U program on our Hart's Woods Preserve. Offered free through a partnership between Central Bucks Family YMCA and The United Way's Bucks County Women's Initiative, Empower U is an 8-week program that enhances positive self-image in teen girls. The group chose a nature hike with Heritage Conservancy as a way to de-stress. Through silly camera selfies and interesting nature discoveries, the girls had a wonderful time in the great outdoors. Heritage Conservancy was honored to have the opportunity to support the Empower U program by providing this hike.



At the end of May, Heritage Conservancy offered the community the exclusive opportunity to explore the privately-owned Krout's Mill House, a mid-18th-century farmhouse in Bedminster Township. Jeff Marshall provided an in-depth tour through this homestead that contains rare architectural elements. We had a full house, and the crowd was entertained by his fascinating knowledge of the home. ▼



◀ For the second year in a row, we held our "Be Kind to Bats & Other Nocturnal Creatures" event here at Aldie Mansion. With a costume contest, face painting, trick-or-treating around the mansion, and a presentation of real live creatures of the night from our friends at AARK, the evening was a graveyard smash! It was wonderful to see so many members of the community enjoying our historic headquarters while learning about the wildlife of our region.

To preserve and protect our natural and historic heritage

# Bristol Marsh Virtual Tour

In 2015, we completed a project that will continue to promote an important natural resource. Our virtual tour of the Bristol Marsh Nature Preserve provides an overview of Bristol Marsh to a broader audience that might not otherwise have the opportunity to experience it firsthand.

Located adjacent to historic Bristol Borough's Waterfront Park, the 33-acre preserve contains a unique fresh water tidal marsh that helps to filter water before it enters the connecting Delaware River, and it supports a diverse ecosystem of plant and animal life. Home to more than 350 plant and animal species, including endangered and threatened species, we often highlight the importance of this incredible natural resource through educational field trips and property cleanups.

Through the support of Verizon, the William Penn Foundation, and PA DEP Coastal Zone Management, Heritage Conservancy created

this virtual tour that guides adult and children learners through the marsh's habitat while highlighting wildlife, plants, and surrounding historical landmarks of Bristol Borough. Although it is a standalone piece, this video will pair well with "Bristol Marsh: Learning Beyond the Classroom," a manual that our organization created that provides teachers and educators with a guide for explaining features of the marsh to students.

By making this tour available to students and the public, Heritage Conservancy hopes to shed light on the need for stewardship of this special habitat.



**On Saturday, September 26th, Heritage Conservancy held a cleanup at the Bristol Marsh Nature Preserve with help from local Boy and Girl Scouts in honor of National Public Lands Day.**

# For the Birds!



Photo courtesy of Curtis Cowgill

Now available for your hiking and viewing pleasure, we present our "For the Birds!" birding guide of Quakertown Swamp. To further connect our community with the abundant wildlife in our area, Heritage Conservancy designed this informational brochure that allows you to explore the area.

This brochure is a result of our Nesting Bird Survey, which expert birder Diane Allison led in the spring of 2014. Combining this survey with two previous surveys, there have been more than 140 bird species observed flourishing in the swamp.

**Visit [heritageconservancy.org/for-the-birds](http://heritageconservancy.org/for-the-birds), or contact us at 215-345-7020 for a printed copy.**

# Our supporters

## Businesses

### \$5,000+

Cross Keys Place  
Shopping Center  
Jeffrey A. Miller  
Catering Company  
Penn Color, Inc.  
PPL Corporation  
Preservation Works LTD  
The Thompson Organization  
Univest – Banking, Insurance  
& Investments  
Verizon

### \$2,500-\$4,999

AmeriStructure LLC  
Bucks County  
Orthopedic Specialists  
Bucks Digital Printing  
Curtin & Heefner LLP  
Dear Garden Associates, Inc.  
Fox Rothschild LLP  
Hawk Opportunity Fund  
Hill Wallack LLP  
Jamie Hollander Gourmet  
Foods and Catering  
Max Spann Real Estate  
and Auction Company  
National Penn Bank  
Penn's Grant Realty  
Peruzzi Toyota  
Worth & Company, Inc.

### \$1,000-\$2,499

Addison Wolfe Real Estate  
ArcheWILD  
Antheil Maslow &  
MacMinn, LLP  
Brooks & Barber Tree  
Management  
Bucks County Bank  
Clemons Richter & Reiss, PC  
Covenant Bank  
DBD Realty LTD LLC  
Doylestown Shopping Center  
Merchants Association  
Eiseman Roofing and  
Construction Company, Inc.  
First National Bank and Trust  
Company of Newtown  
The H&K Group  
J.A. Smith Heating  
& Air Conditioning  
JD Fedele Construction  
Langan Engineering  
& Environmental Services  
NRG  
Pritchard, Bieler, Gruver  
& Willison, P.C.  
QNB Bank  
Silverman Gallery  
Steaz – Healthy Beverage LLC  
The Weimer Group  
Whole Foods Market  
Zaveta Custom Homes, LLC

### \$500-\$999

Alderfer Glass Company  
Associated Production  
Services, Inc.

Bee, Bergvall and Company,  
P.C.  
Bugajewski Facility Services  
Cultural Landscapes, Inc.  
Doylestown Cemetery  
Grim, Biehn & Thatcher  
Kistler Tiffany Benefits  
Kramer Portraits  
Mainly Mushrooms, LLC  
McCaffrey's Food Markets  
Milford Enterprises, Inc.  
Norris Sales Company, Inc.  
Paxson Hill Farm  
Renninger's Cabinetworks Inc.  
Repko Williams, LLC  
Robyn Graham Photography  
The Sanford Alderfer  
Companies  
Schultz & Williams  
The Steve Darlington Team –  
BHHS Fox & Roach  
Thomas K. Fischer, Builders  
& Developers  
Van Cleef Engineering  
Associates  
United Capital

### \$250-\$499

Advanced Color Signs  
& Graphics  
AP Creations, LP  
Barb-Lin Carpet One  
Bartlett Tree Experts  
Carter van Dyke Associates  
Clear View Window  
Cleaning Services  
DeeterUSA  
Donnelly Marketing Services  
Associates, LLC  
Doylestown Wealth  
Management, Inc.  
Ellen Happ Architect  
Flo Smerconish Realtor  
Fulton Bank  
George Nakashima  
Woodworker S.A.  
Gilmore & Associates, Inc.  
The Glenmede  
Trust Company  
GluckWalrath, LLP  
Happ Contractors, Inc.  
Harris & Harris  
The Inn at Bowman's Hill  
J. Carroll Molloy, Realtor  
Jadco Industries, LTD  
June Hines Pilates  
Keenan Honda, Keenan  
Motors, & Keenan Collision  
Kenderdine's Heating Oil  
Knight Engineering, Inc.  
Kreischer Miller  
LCF Construction, Inc.  
Manoff Market Gardens  
McGuire Electric Services Inc.  
Michael J. Tucci Plumbing,  
Heating, Air Conditioning  
LLC  
Mike Granieri Lawn Care, Inc.  
Minuteman Press/Signarama  
The OMNIA Group Architects  
The Outdoor Room, LLC

Painting By Randy Ziegler  
Penn Community Bank  
Phillips & Donovan  
Architects, LLC  
Pine Run  
Retirement Community  
Plumsteadville Inn  
PNC Wealth Management  
Pritchard Design  
Professional Landscape  
Services, Inc.  
Pulse Technologies, Inc.  
Quinn & Wilson, Inc. Realtors  
RMC Clean Sweep Inc.  
Schumacher & Associates  
The Scott Family  
of Dealerships  
Shepherd Agency LLC  
SnapCab by Bostock  
Company, Inc.  
Studio D Pilates  
Triumph Brewing Company  
of New Hope  
Warren Weiss Insurance  
Agency, Inc.

### Under \$250

Aaron Mitchell Photography  
Addison Wolfe Real Estate  
Adorn Me  
Alber-Haff Parking  
Service, Inc.  
Armen Elliott Photography  
Arthur L. D'Angelo,  
CLU, ChFC  
Back Porch Jug Band  
Berkshire Hathaway  
Bluestone Gardens  
Boucher & James, Inc.  
Bountiful Acres  
The Bridgeton House  
Buckingham Valley  
Vineyards & Winery  
Bucks Country Gardens  
Bucks County Hair Company  
& Day Spa  
Bucks County Herald  
Bucks County Magazine  
Bucks County Raquet Club  
Bucks County River Country  
Byers' Choice Ltd.  
C. Robert Wynn  
Associates Inc.  
Callaghan Interior Design  
Carol C. Dorey Real Estate  
Carol Manicone Garden  
& Landscape Design  
Carroll Engineering  
Corporation  
Coldwell Banker Hearthside,  
REALTORS  
Coles Nurseries, Inc.  
Cooper Mechanical Inc.  
County Builders Inc.  
Crews Surveying, LLC  
Crossroads Bake Shop  
Cunningham's  
Automotive Repair  
Curran Realty Advisors –  
Appraisers, LLC  
Dale Rimmer Siding

Dinner's Done Personal  
Chef Service  
Donna Marie Creations  
Dontech, Inc.  
Door to Door Organics  
The Doylestown Bookshop  
The Doylestown Private  
Wealth Group  
Doylestown True Value  
Enviro-Technology  
& Design, Inc.  
Essentials Salon and Spa  
Fitzgerald Esplin Advertising  
Frog Hollow Farm Bed  
and Breakfast  
Gemmi Construction, Inc.  
Golden Pheasant Inn  
The Graphic Edge, Inc.  
Hearth & Hedgerow Ltd.  
Hickory Kitchen  
Hillyard Delaware Valley  
Histand's Equipment  
Historic Hotel Bethlehem  
Holiday House Pet Resort  
Hopkins & Hopkins, Attorneys  
Indian Valley  
Appraisal Company  
Inspiring Teen Magazine  
Intrigue Fine Apparel  
Jamison Publick House  
John B. Hoff & Son Plumbing  
& Heating  
Judy Serbinski,  
Massage Therapy  
Jules Thin Crust  
Keeping In Touch Bodywork  
& Massage Therapies  
Keystone Tree Experts  
Kitchens by Charles Weiler  
Koziar's Christmas Village  
Landscape Design  
Group, Inc.  
Lehigh Valley IronPigs  
Maggi Boyer Consulting  
The Marshall Financial Group  
McCoole's at the Historic  
Red Lion Inn  
McNamara Bolla & Panzer PC  
Memorable Affairs, Inc.  
Michael D. Moss Real Estate  
Mikula Web Solutions, Inc.  
& Bucks County Alive!  
Moore Cleaning LLC  
Nicole Leigh Photographers  
Oskar Huber Furniture  
Pannella Security  
Systems LLC  
Penglase & Benson Inc.  
Philadelphia Eagles  
Philadelphia Flyers  
Philadelphia Rock Gyms  
Plumstead Studios  
Stained Glass Artists  
Pretty in Paint Parties  
Professional Recruiting  
Associates, LLC  
Public Strategies Impact  
Ralph C. Fey AIA Architects  
Ransome CAT  
Raphael Architects  
reAlliance Real Estate  
Development  
Sears Iron Works  
SEI Investments Company  
Sellersville Theater 1894  
& Washington House

Shaving Grace Barbers  
SkyZone  
Stephanie's Bridal  
Stuckert & Yates  
T.W. Cooper Insurance  
Tavo Packaging, Inc.  
Tilly Mint's Tea Room  
Tinsman Brothers  
Lumber Company  
The Valley Cafe  
Vincent Pools Incorporated  
Virginia W. Sigety, CABI  
Fashion Consultant  
Weigner Chimney Service,  
Inc.  
Wild Birds Unlimited  
William B. Parry & Son, Ltd.  
Insurance  
Willow Wellness  
Worthington & Shagen  
Custom Builder, Inc.

## Individuals

### \$10,000+

Scott Bieler  
Christopher and  
Whitney Chandor  
Polly Dunn  
Brian G. and Margaret Firth  
Edward and Christina Murphy  
Jeffrey H. Nicholas  
Frank and Anne Palopoli  
Stephen and Candace Phillips  
Scott and  
Anne Patricia Reines  
Eric and Maria Rieders  
Robert L. Russell  
Manning and Virginia Smith  
Marvin and Dee Ann Woodall

### \$5,000-\$9,999

Fred and Gisela Beans  
J. Jay and Barbara Belding  
Kieran and Judy C. Cody  
Georgiana S. Coles  
Thomas K. Fischer  
Joseph and Susan Kipp  
Jeffrey and Barbara Lindtner  
Sydney and Sharon Martin  
Michael and Jean Mathey  
Trevor and Linda McNeill  
Robert J. and  
Sandra H. Mockoviak  
George and Ashley M. Pohle  
William Hart and  
Jewel Rufe, III  
Jeffrey A. and Ada Smith

### \$2,500-\$4,999

Dan and Susan Barnes  
William and Linda Deeter  
George J. and  
Catherine Donovan  
D. Rodman and  
Valerie Eastburn  
Ronald W. and Joy Feigles  
T. Mitchell and Ann McCauley  
Jonathan and Lorraine Sharaf  
Christopher Willett

### \$1,000-\$2,499

Phil and Linda Cacossa  
Douglas and  
Carolyn S. Carmichael  
Richard A. and Flo Celender  
Terry and Diane Clemons

To preserve and protect our natural and historic heritage

Edward J. and  
 Kathleen Fernberger, Jr.  
 Gary and Elizabeth Fetterman  
 Vail P. Garvin, FACHE  
 and Ronald Unterberger  
 William F. and  
 Margaret Hecht  
 Richard Henriques  
 Timothy and Aurora Hughes  
 Stephen King and  
 Denise Pancari  
 Bernard and  
 Debra Lajeunesse  
 John F. and Carol  
 McCaughan  
 George B. Michel and  
 Elizabeth M. Turek-Michel  
 D. Scott Miller  
 Thomas and  
 Christine Motamed  
 Laurie Sauter and  
 Gail Griffiths  
 Kenneth Snyder and  
 Cecile Balizet  
 Beth L. Snyder, DMD and  
 Stu Wilder  
 Jay and Kathy Summerall  
 Kenneth and  
 Margaret Swanstrom  
 John G. and  
 Rochelle Thompson  
 Cynthia Welsh-Haines

#### \$500-\$999

Ira and Yasmine Baeringer  
 Frederick J. Bauer and  
 Robert J. Mennie  
 Edward and Lynn Breen  
 L. Eugene and  
 Nancy P. Brown  
 Roger Byrom and  
 Wendy Rasmussen  
 Thomas J. Cahill  
 Robert Cebrick  
 Stephen and  
 Maureen Chadwick  
 Lizann Cooke  
 Malcolm and Elaine Crooks  
 H. Christopher and  
 Kathryn C. Delplato  
 Louis and Marion S. Dierking  
 Christian and  
 Colleen Donovan  
 Pasquale and Beth Fedele  
 Larry and Maryann Genuardi  
 Andrea Goodrich and  
 James Kaff  
 John and Mary Ann Gribb  
 Alton and J. Debra Grube  
 Steven R. and Joyce Hanson  
 Dennis and Mary Helf  
 Charles and Bonnie Klein  
 Scott and Joy Levy  
 William H. Luce  
 Gary and Helene Mathern  
 Donald and Debbie Metzger  
 Richard B. Millham  
 Cheryl B. Montero  
 George and Carol Paone II  
 Doreen Paynton  
 Henry and Charlotte  
 Rosenberger  
 Mark and Barbara Rubin  
 Marilyn Schaumburg  
 William and Sally Swezey  
 Thomas Thomas

Mary B. Toporcer  
 Daniel and Jean Upton

#### \$250-\$499

Keith and Kathryn Allison  
 Christopher and  
 Veronique Asplundh  
 C. David and Susan Baker  
 Jean S. Bauer  
 Susan T. Beans  
 David and Diane Bilheimer  
 David Brown and Libby Hahn  
 Derek and Frances Bruce  
 Joseph and Marian Chiesa  
 Thomas and Angela Cino  
 Curtis and Carolyn Cowgill  
 Matthew and Cherie Cross  
 Richard and Linda Danese  
 Joseph C. and  
 Carolyn Della Rodolfa  
 Eric and Melanie Dickersbach  
 Sandy and Beth Dondici  
 Laure Duval  
 David and Catherine Ebaugh  
 Kelly E. Finno  
 Frank N. and  
 Jeanette M. Gallagher  
 Lou and Kathy Gentner  
 William Haas  
 Vince Haas and  
 Tammy Schane  
 Robert and Louise Harman  
 Richard B. and Claire Harris  
 Robert and Jeanne Hurford  
 Brook and Christine Jennings  
 Francis John  
 Ken and Amy Keller  
 Joan M. Kelley  
 Chris and Pamela T. Kemper  
 Kristine Kern  
 Lawrence C. LaFevre  
 William and Jeanine Libasci  
 William and Christine Maeglin  
 Kathleen W. Mahanes  
 Ann Marshall  
 Kevin McClay  
 John Miller and  
 Marge Siefken  
 David and Joanne Murray  
 Craig and Dorothy  
 Linville Neal  
 Scott H. Nicholas  
 Kevin Norris  
 Bonnie J. O'Boyle  
 James F. Paccioretti  
 Clyde and Betsy Payn  
 H. Joseph and  
 Heather Phillips  
 Stanley A. and Susan Plotkin  
 Larry and Kathryn Presley  
 Andrew and Michelle Rudnick  
 Lisa Sandler  
 Daniel and Lisa K. Schubel  
 Charles Shorday  
 Scott and Jennifer Simonsen  
 Peter and Susan Sleeman  
 John and Carol Small  
 Lori A. Stephenson  
 Ronald Strouse  
 John and Bonita Sylvester  
 John and Carol VanLuvanee  
 Robert and Alice Vernon  
 Frank and Francine Verwiell  
 Kevin J. Watkins  
 Kenneth and Johanna Wolski

#### Under \$250

Robyn Agri  
 Todd and Terry Alderfer  
 Arthur H. Alexander  
 David and Diane Allison  
 Keith and Karen Allison  
 Patricia Andrews  
 Ralph and Victoria  
 Antonucci, Sr.  
 Anthony Antonucci  
 Ralph Antonucci, Jr.  
 Raymond and Erica Armour  
 Frank C. Arrison  
 Ruth Aschmann  
 Patrick and Christina Baker  
 Ann Bamford  
 Eugene Barclay  
 John and Lorraine Bender  
 John and Janice Benner  
 Caroline Bennett  
 Orland and Nancy Bergere  
 Bernard and Valerie  
 Berlinger, Jr.  
 Mary Ann Bernardino  
 Heather Bernhardt  
 Michael and Laura Biersmith  
 Anne Biggs  
 Mary Ann Binns  
 William and Anne Bishop  
 John and Denise Blasdale  
 William and Jane Blaser  
 Frank Boni  
 Jeffrey Bower II  
 Harry and Elizabeth Branson  
 James and Kelly Bixler  
 Richard and Ruth Brinckman  
 Michael and Donna Broderick  
 Harry W. and Laurie Brown  
 Ronald Brown  
 David W. Brown  
 Arthur and Lynn Buck  
 H. Boyce and Karen Budd  
 Kathryn K. Burchinal  
 Lynn T. Bush  
 Dennis and Kay Byrnes  
 David and Roxanne Caccavo  
 Theodore Cannon  
 Kimberly Carman  
 Doris Carr  
 Robert Carroll  
 Neal and Leslie Carson  
 Andrew and Ramona Carson  
 Martin and Barbara Carter  
 Joseph and  
 Jacquelyn Carugati  
 Robert and Evelyn Castor  
 John and Eileen Catino  
 Susan G. Caughlan  
 Petrona M. Charles  
 Allen and Glenda Childs  
 Michael and Laurie Clabbers  
 Tom Cockley  
 Kevin A. Cody  
 Carl W. Conrad, Jr.  
 Jacqueline A. Conroy  
 Susan Cooke  
 Jon and Elizabeth Courtney  
 Peter and Karen Cozzi  
 Mary Ellen Cronin  
 Stephen R. Cummings  
 John and Jennifer Cusick  
 George and Phyllis Dailey  
 Elizabeth Ann Danese  
 Nick D'Angelo  
 Karen C. Dash  
 Phillip and Joanne David

Thomas and Ethyl Davis  
 Mark and Marie Dean  
 Milena Decicco  
 Andrew and Audrey deGruchy  
 Merrill and  
 Suzanne Detweiler  
 Patricia Dicandilo  
 Marc Dinardo  
 E. Douglas and  
 Patricia Ann DiSandro  
 Armand G. DiYenno  
 Allen G. Doak  
 John J. and Claire Donohue  
 Carol C. Dorey and  
 John Berseth  
 Thomas and Tracy Dougherty  
 Aimee C. Douglas, CPA  
 Walter Drill and  
 Susan Brickajilk  
 Nancy Duffy  
 W. Bruce and  
 Karen Dunkman  
 G. Frederick and Linda Dunn  
 Donald and Bernice Duvall  
 Patrick and Dorothy Egan  
 Dr. Michael S. Emery  
 James and Dawn Engel  
 Eugene and Marlene Epstein  
 Frederick and Mary Lou Erk  
 Karin M. Ernest  
 Mark and Suzanne Eveland  
 E. Matthew and Karen Farley  
 Tim and Linda Felder  
 Jon L. Felton and  
 Connie Wilson  
 Bernie and Judy W. Finch  
 William and Susan Finney  
 Robert M. and Lutz Fischer  
 Douglas and Donna Fisher  
 Lowell and Karen Fisher  
 Kathleen W. Fitzgibbon  
 William and Ruth Focht  
 Michael and Robin Folkerts  
 Donald O. Formigli  
 Laura Fox  
 Kenneth and Cecile Frank  
 Michael and Denise Frank  
 Shannon Fredebaugh-Siller  
 John and Joanne Frekot  
 Robyn R. Frenze  
 David S. Froehlich  
 Jeffrey and Beverly Fulgham  
 Adrienne Gallagher  
 William and Janice Garner  
 Angelo and Donna Genova  
 Sarah Gerding and  
 John DeVore  
 Michael Gerrity  
 Lynn Dana Gibson  
 Edward Giera and  
 Kimberly Hirschman  
 Steve and Kathie Gilmore  
 Mary Jane Gimpel  
 Eugene and Wendy Gladston  
 Matthew Glose  
 T.G. and Marie Goldkamp  
 Carol Gomeringer  
 Patrick Goodwin  
 Caesar J. Gorski, Jr.  
 Richard Gottlieb  
 Colleen H. Graney  
 Michael and Nancy Green  
 Barbara Gross  
 Eleanora S. Gruber  
 Brian Grzelkowski and  
 Beatrix Von Watzdorf

Nancy J. Halpin  
 Susan Halstrick  
 Eugene and  
 Marjorie Hamilton  
 Stephen and Lisa Hanover  
 Alard L. and  
 Susan W. Hanover  
 Kate Harper and Paul Kelly  
 Stephen B. Harris, Esq.  
 Mark Haskins  
 Walter Hauck and  
 Sharon Anderson  
 Lansing and Monica Hays  
 Michael and Lori Hays  
 Nina Heitz  
 Abigail Henshaw  
 Jay P. Hibbs  
 Alanna Hibbs  
 Diane Hillman  
 Kenneth and  
 Theresa Hinterberger  
 William and Laurel Hoffmann  
 Dave Hoke  
 Kenneth and Priscilla Hoke  
 Kenneth and Jean Holland  
 David and Agnes Holst  
 Thomas Hornak  
 Paul and Kathleen Horwatt  
 Thomas and Dolores Howland  
 Merrill Bryant and  
 Elissa Huber  
 David and Virginia Hudnut  
 William D. Hutt  
 Robert Infarinato  
 Charles and Joanne Isaac  
 Don and Gretchen Ivey  
 Richard and  
 Marilyn Jacobson  
 Franklin Jarrett and  
 Mary Eyth  
 Richard M. Johnson  
 David Scott and  
 Marianne Johnson  
 Patricia A. Jud  
 George and Barbara Karr  
 Jeffrey and Susan Karr  
 Neil and Barbara D. Kauffman  
 Richard and Jill Kearns  
 Tim and Theresa Kelley  
 Peter P. Kerl  
 Christopher and  
 Catherine Kerr  
 Kevin A. Kester  
 James and Joanness Kiel  
 Richard and Sandra Kittredge  
 Joel S. Klaperman  
 Alan R. Klingbeil  
 Anthony and Katie Kmetz  
 Lewis Ray and  
 Susan M. Knight  
 Steven and Michele Koch  
 W. Roy and Nancy Kolb  
 Stephen and Kira Kraiman  
 Diane S. Kregger  
 Al C. and Barbara S.  
 Krempa, Jr.  
 Teresa M. Kruse  
 George Kuebrich  
 Glenn R. and  
 Janice A. Kuklick  
 John M. Kulak  
 Linwood Kulp, Jr.  
 Jeff and Pavla Lapin  
 Lara LaSala  
 David M. Lauer  
 Philip D. Layton

Donald N. Lesperance  
Edward and  
Alexandra Leydon  
Arthur and Alice Lintgen  
Carol A. Lipson  
Ed Litzemberger  
Linda J. Lonsinger  
Kyle R. Loucks  
Stephen J. Lowe  
Edward and Susan Lukiewski  
Eric and Kristen Luthi  
William and Jane MacDowell  
William and Romaine Macht  
Donna Madigan  
John F. and Tina Magura  
Duane and Sandra Malone  
Orest E. Mandzy  
Lawrence and Judith Mann  
William and Catherine Marek  
Allen and Phyllis Marks  
David L. Marshall  
Jeffrey and  
Becky L. Marshall  
Jolene Martin  
Nora P. Martin  
George and Anne Mason  
Jimmie and Brenda Maxfield  
Ruth S. Maxson  
Michael and Leslie May  
Len and Amy Mazzanti  
Donald and  
Grace McClintock  
Robert and  
Mary Lou McFarland  
Joseph and  
Marguerite McGarvey, Sr.  
Donald and  
Jeanette McKeegan  
William McKeegan  
Kathryn R. McKenna  
Andy McKenzie and  
Cathy Rowe  
Scott Mcleod  
R. Bruce and  
Lorraine McMahon  
Roger and Anne McManimon  
James M. and  
Mary Ellen McMaster  
Terry A. McNealy  
David R. McShane

Patricia Mease  
Carl F. Meixsell  
Adelina Mejia  
Jonathan and  
Sharon Mendelson  
David and Lisa Mergen  
James and Ada Miller  
Patricia Ann Miller  
Bartley E. and Robin Millet  
Gertrude E. Miliken  
Frederick and  
Deborah Moore  
Mayra Moreno  
William Todd and  
Stacy Morris  
Holly Heath Mullin  
Oscar and Grace Muscarella  
Mary M. Musselman  
Benjamin and Susan Myerov  
James and Joy Nash  
James and Betsy Nilsen  
Paul and Karen Nilsen  
George Nolte  
Robert and Nadine Noonan  
Robert and  
Elizabeth Norman  
William J. Novak  
Volker and Denise Oakey  
James and Debra Orben  
Elizabeth Paczolt  
Weiner, M.D.  
Donald and Joanne Page  
Marie B. Page  
Thomas J. Pagliaro, Jr.  
Antonio and Nicole Panno  
Giovanni Panno  
George Paone III  
Jennifer V. Paquette  
Brandon Pariser and  
Adrian Shanker  
John T. and Kathleen Parry  
Diane Paul  
Marcia I. Paullin  
David and Margery Peet  
Greg U. and  
Tracey Pereborow  
Margaret B. Perry  
Timothy and Elizabeth Pesce  
Katherine Pezzi  
Colin and Lynn Phelps

Fred L. Phelps, Jr.  
Enid E. Phreaner  
Blanche B. Phythyon  
Michael Pierce  
Thomas and Karen Pirrone  
William and Teresa Present  
Richard J. and Elinor Pressel  
Matthew and Agnes Pruitt  
Thomas M. Pugel  
Curtis and Carol Quigley  
Marguerite C. Quinn  
Ann R. Rainey  
Michelle Rainier  
Patricia L. Rajnic  
Stephen and Margaret Rash  
Paul Rehmet and Naline Lai  
Donald Reilley  
Ray and Karen Reinard  
John and Eileen Reither  
Judith E. Renstrom  
Paul and Ann F. Rhoads  
Dennis G. Rice  
Stephen A. Rifici  
Willis M. Rivinus  
Robert and Theresa Roberts  
Kenneth and  
Donna Rodemer  
Raymond and Karen Rogers  
Joseph and Karen Rogus  
Denise Rohan  
Michael and Ellen Rosica  
Mark and Lori Rosolowsky  
Patricia Royston  
William and Jennifer Rufe  
Ronald Rufo  
John H. and Jan Ruhle  
Blair and Tammy Rush  
Jean W. Rutherford  
Judy A.M. Ruthrauff  
Albert and Irina Rybalkin  
Scott and Pat Sanders  
Bryce and Jane Sanders  
Gustave Scheerbaum  
Brian and Traci Schilling  
Raymond and Linda Schulz  
Karl L. Schwartz  
Reinhold and  
Marilyn Schwenk  
Walter E. and Debbie Segl  
Donna Sempowski

Troy and Georgi Sensing  
Scott and Linda C. Sepsy  
Carolyn K. Shaddinger  
Bruce W. Shanzer  
John and Faith Sheehan  
David and Kristin Shields  
James and Jane Shields  
Curt Shreiner and  
Denise Frost  
Rodney and Carol Shultz  
Bruce and Paula Siller  
Neil and Cindy Skoriak  
Debi F. Slatkin  
Carl and Elsie Slebodnick  
Gurney P. and Faith  
Sloan, Jr.  
Thomas and Darlene Smicker  
R. Michael and  
Dee Ann Smith  
Rich and Cary J. Smithson  
John W. and Mary Smithson  
Sarah Snider  
Richard W. Snowden  
Cathy Snyder and Paul Kozel  
Patrick and Marie Solano  
Debora Speese  
Peter and Barbara Sperry  
Mark R. Spezzaferro  
Carl and Terry St. Bernard  
John and Melissa Stanton  
Vickie Stauffer  
John C. Steck  
Raymond and  
Debora Steward  
T. Howard and Alyce Stick  
Todd and Lori Stone  
Gabriela Strunk  
James A. Stuart, III,  
and Elizabeth Norris  
Charles Sutherland and  
Marilyn Vogel  
Craig and Sue Sutton  
Martin and Susan Sutton  
Charles Swartz  
Burnetta Swartz  
Mike and Robyn Symons  
David and Linda Taurus  
Stuart and Janet Teacher  
Jack C. Thibeault  
Jim Thompson

Eric R. and Michele Thrush  
Brian and Linda Tilton  
Lynne Tomlinson  
Carolyn Torrance  
Wally and Susan Trnka  
John Tyciak  
Frank and Karen Untermyer  
William and Candace  
Van Wagner  
Matthew and Adriana  
Van Zwieten  
Dennis and  
Maxine Vandegrift  
Lisa M. Vargo  
Christopher and  
Yvonne Ventresca  
Clarence and Nancy Walbert  
Mary T. Walrond-Goff  
James F. Walter  
Robert A. Walter  
Andrew and Elaine Warren  
Curt S. Wary  
Robert Wasserman  
Benjamin and Jessica Webb  
Debra Weiner and  
Mary Golman  
Nancy G. Wells  
Wendy Webber Welsh  
Douglas and Deborah Welsh  
John M. and Agnes Welsh  
Stephen and Lisa White  
Reed W. and Amy White  
Stephen and Janeen White  
Ken and Alice Williams  
Lauren M. Williams  
William C. and  
Regina Willoughby  
Jody L. Wilson  
Joseph Wingert  
Robert Winton  
Robert C. Wonderling  
Anne Woodbury and  
Phil Rollhauser  
Donald and  
Judith Worthington  
Graham and Lorna  
Middelow Yearwood  
Sandra Yerger  
Sharon Young  
Matthew Zelesko

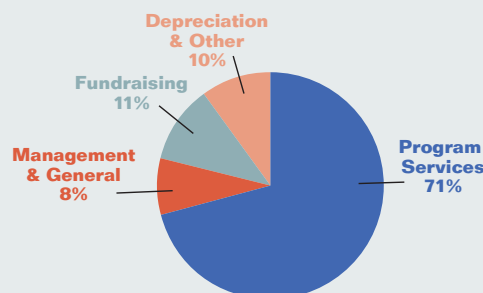
## 2015 Financial Overview

Heritage Conservancy's fiscal management practices ensure that funds raised in the current year are effectively used to advance our conservation and education mission. We thank the many funding partners listed on these pages for their continuing support.

**“In the furtherance of our mission, the Conservancy placed a conservation easement on a 82-acre parcel resulting in a fair market value loss of \$1,551,866.”**

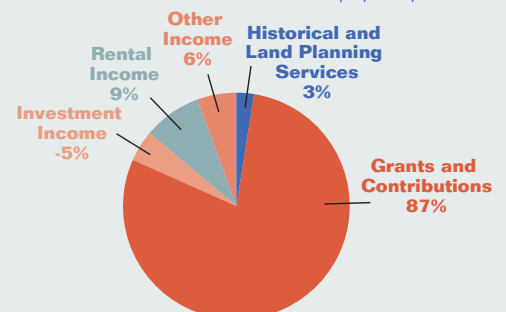
### 2015 Expenses

Program Services	\$1,494,687
Management & General	174,298
Fundraising	224,101
Depreciation & Other	203,574
<b>Total</b>	<b>\$2,096,660</b>



### 2015 Income

Historical and Land Planning Services	\$ 147,540
Grants and Contributions	3,782,636
Investment Income	(219,138)
Rental Income	381,527
Other Income	263,764
<b>Total</b>	<b>\$4,356,329</b>



Forrest and Carol Zetterberg  
Susan B. Ziegler  
Barbara Zimmerman  
Kevin and Michele Zosulis

## Private Partners

Aark Wildlife Rehabilitation  
and Education Center  
AP Creations  
The Asplundh Foundation  
The Bach Choir  
of Bethlehem  
Bristol Boy Scout Troop 212  
Bristol Cub Scout Pack 212  
Bristol Riverside Theatre  
Bucks County  
Audubon Society  
Bucks County  
Bar Association  
Bucks County  
Childrens Museum  
Bucks County  
Foodshed Alliance  
Bucks County Symphony  
Care-A-Lot Preschool  
Central Bucks Bicycle Club  
Central Bucks Chamber  
of Commerce  
Central Bucks Family YMCA  
Christopher and  
Whitney Chandor  
County Theater  
Davis Charitable Trust  
Delaware & Lehigh  
Trail Alliance

Louis and Marion S. Dierking  
Dow Chemical Company  
Dow Gives  
Doylestown Food Co-Op  
Eugene and Marlene Epstein  
Friends of Washington  
Crossing Park  
Gallows Run  
Watershed Association  
Girl Scout Troop 2153  
Greenbelt Overhaul Alliance  
of Levittown (G.O.A.L.)  
John and Linda Haines  
Haley Foundation  
Haycock Historical Society  
Johnson & Johnson Family  
of Companies  
Lehigh Valley  
Community Foundation  
Levittown Boy Scout  
Troop 316  
Edward and  
Alexandra Leydon  
Lost River Caverns  
Merck Company Foundation  
The Mennonite Foundation,  
Inc.  
Minerals Technologies, Inc.  
Montgomery County Theater  
The Nature Conservancy  
The Newport Foundation  
Norman Raab Foundation  
Peaceful Living  
Creative Gifts  
Pennsylvania Land  
Trust Association

The Pfundt Family  
Foundation  
Quakertown Community  
School District  
Redeemer Lutheran Church  
of Jamison  
Quakertown Alive!  
Rattlesnake & Mine Hill  
Wildlife Preservation Trust  
Rebecca Hart  
Swartzlander Trust  
Sierra Club,  
Allegheny Group  
Shared Support  
The Sigety Family  
Single Volunteers of  
Bucks County  
Six Brothers Foundation  
Springfield Township  
Historical Society  
The State Theatre  
Tinicum CSA  
Tonamora Foundation  
Town & Country Players  
Travelers Community  
Connections  
Tree Vitalize Program  
Truist Comprehensive  
Distribution  
Tyco Matching Gift Program  
VIII Brothers  
Charitable Foundation  
Visit Bucks County  
William Penn Foundation  
Wrightstown  
Monthly Meeting

Yardley Boy Scout Troop 210  
The Young Family  
Limited Partnership

## Public Partners

The 1772 Foundation  
Abington Township  
Bristol Borough  
Bristol Borough  
School District  
Bristol Township  
School District  
Buckingham Township  
Bucks County Agricultural  
Preservation Program  
Bucks County  
Conservation District  
Bucks County  
Cooperative Extension  
Bucks County Natural  
Areas Program  
Bucks County  
Planning Commission  
Bushkill Township  
Chalfont Borough  
Coldwater Heritage  
Partnership  
Delaware & Lehigh Trail  
Alliance Delaware Valley  
University  
Doylestown Hospital  
Doylestown Township  
Doylestown Troop 24  
Dublin Borough  
Durham Township  
East Rockhill Township  
Hatfield Borough  
Haycock Township  
Lower Saucon Township  
Middletown Township  
Montgomery County  
Planning Commission  
National Park Service  
New Britain Borough  
New Britain Township  
Newtown Borough  
Nockamixon Township  
Pennsylvania Department  
of Agriculture  
Pennsylvania Department  
of Conservation and  
Natural Resources  
Pennsylvania Department  
of Environmental Protection  
Richland Township  
Riegelsville Borough  
Solebury Township  
Springfield Township  
Upper Bucks County  
Technical School  
Upper Frederick Township  
Upper Makefield Township  
Upper Tohickon  
Watershed Association  
Visit Bucks County Warwick  
Township  
Williams Township  
Wrightstown Township  
Yardley Borough

## Leading the Way...and Keeping the Promise

The Asplundh Foundation  
The Beans Family  
Jay and Barbara Belding  
Christopher and  
Whitney Chandor  
Judy and Kieran Cody  
Georgiana Coles  
Stephen and  
Mary Darlington  
Nicholas and  
Lynn DeRose  
George and  
Kathy Donovan  
Mary Dunn (Polly)

VIII Brothers  
Alan Fetterman  
Brian and  
Margaret Firth  
Thomas Fischer  
Vail Garvin  
Glenmede Trust  
Company  
The Jackson  
Family  
Jeffrey and  
Barbara Lindtner  
Sydney and  
Sharon Martin



Michael and Jean Mathey  
Ann and Mitch McCauley  
Jeffrey Miller  
Jeffrey Nicholas  
Frank and Anne Palopoli  
Penn's Grant  
Realty Corporation  
The Pfundt Family  
Foundation  
Stephen and  
Candace Phillips  
Quakertown  
Community HS

Scott and Tricia Reines  
Maria and Eric Rieders  
Robert Russell  
and William Mandell  
Calvin Ruth  
Jeff and Ada Smith  
Kathy and Jay Summerall  
The Sigety Family  
John Thompson  
Tonamora Foundation  
Verizon  
Marvin and Dee Ann Woodall  
The Young Family

To join these leaders in Keeping the Promise or to learn more,  
contact Ann McCauley at 215-869-0880 or [amccauley@heritageconservancy.org](mailto:amccauley@heritageconservancy.org).

# 2015 Land Preservation Accomplishments

## Wernett Property

Type: Holder of the  
Conservation Easement

Acreege: 17 acres

Location: Springfield Township

Funding Partners:  
Bucks County and  
Springfield Townships

## Caccavo Farm

Type: Holder of the  
Conservation Easement

Acreege: 70 acres

Location: Durham Township

Funding Partners:  
Bucks County Agricultural Land  
Preservation Program

## Croydon Woods

Type: Owner of Property

Acreege: 82 acres

Location: Bristol Township

Funding Partners:  
Bucks County, PA DCNR and  
the William Penn Foundation



85 Old Dublin Pike • Doylestown, PA 18901

Non-Profit Org.  
U.S. POSTAGE  
**PAID**  
Doylestown, PA  
Permit No. 315

# Heritage Conservancy Board of Directors

## Chairman of the Board

Christopher B. Chandor,  
Esq.

## Vice Chairman

Brian G. Firth, MD, PhD

## Treasurer

Robert W. Pritchard, JD,  
CPA

## Secretary

Stephen L. Phillips

## Directors

J. Jay Belding  
Judy Chang Cody  
Georgiana S. Coles  
Nicholas DeRose, PG  
George J. Donovan

Dr. Vail P. Garvin FACHE

Sydney F. Martin

Jeffrey H. Nicholas

Frank C. Palopoli

Dr. Scott Reines, MD, PhD

Maria T. Rieders, PhD

Robert L. Russell

Jonathan Moore Sharaf

Beth Snyder DMD

Kathy H. Summerall

Richard M. Welch, Jr.

Marvin L. Woodall

## Chairman Emeritus

William Hart Rufe III

## Directors Emeritus

Robert L. Byers

Elizabeth H. Gemmill, Esq.

J. Lawrence Grim Jr., Esq.

Joseph R. Kempter, CPA

# Heritage Conservancy Staff

Joyce G. Austin,  
*Administrative Assistant*

Laura Baird,  
*Senior Land  
Conservationist*

Linda J. Cacossa,  
*Chief Operating Officer*

Catharine Chambers,  
*Assistant to the Director  
of Leadership Giving*

Karen Cook,  
*Administrative Assistant/  
Receptionist*

Alexandra Dashkiwsky,  
*Marketing and  
Communications  
Coordinator*

Jim Drénnan,  
*Conservation Steward*

Shannon Fredebaugh,  
*Volunteer Coordinator*

John Greenwood,  
*Property Caretaker*

Diane Hillman,  
*Accounting Manager*

Kris Kern,  
*Senior Land  
Conservationist*

Jeffrey L. Marshall,  
*President*

Ann McCauley,  
*Director of  
Leadership Giving*

Mary Lou McFarland,  
*Senior Preservation  
Specialist*

Katie Paone,  
*Executive Assistant*

Tammy Schane,  
*Membership Coordinator*

Jim Thompson,  
*Senior Conservation  
Steward*

Taylor Thompson,  
*Conservation Associate*

Sandra Yerger,  
*Associate Director  
of Development*

Sharon Young,  
*Director of Properties  
and Programs*



To preserve and protect  
our natural and historic heritage

215.345.7020 • f 215.345.4328

85 Old Dublin Pike

Doylestown, PA 18901

[www.HeritageConservancy.org](http://www.HeritageConservancy.org)

### Photo Credits

Front: Alex Dashkiwsky took this photo on a Heritage Conservancy preserved property in Buckingham Township.

Back: Heritage Conservancy member George Paone captured this photo in New Hope, PA.

