

# The History of the Honey Hollow Watershed



Jeffrey L. Marshall  
President, Heritage Conservancy  
May 4, 2013

# 1859 Farm Map of Solebury Township

---





# 1938 aerial



# 2012 aerial





# Change over 75 years



# Change over 75 years





# 2012 aerial





# 2012 aerial with 1859 property lines





# Tuckamony Farm

---

Isaac Pickering  
House 1747



# Honey Hollow Farm





# Honey Hollow Farm



3









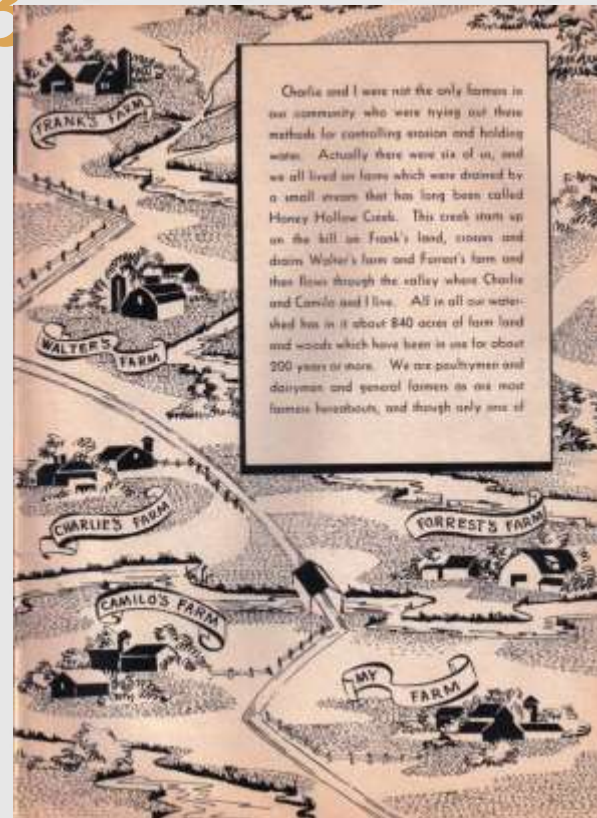
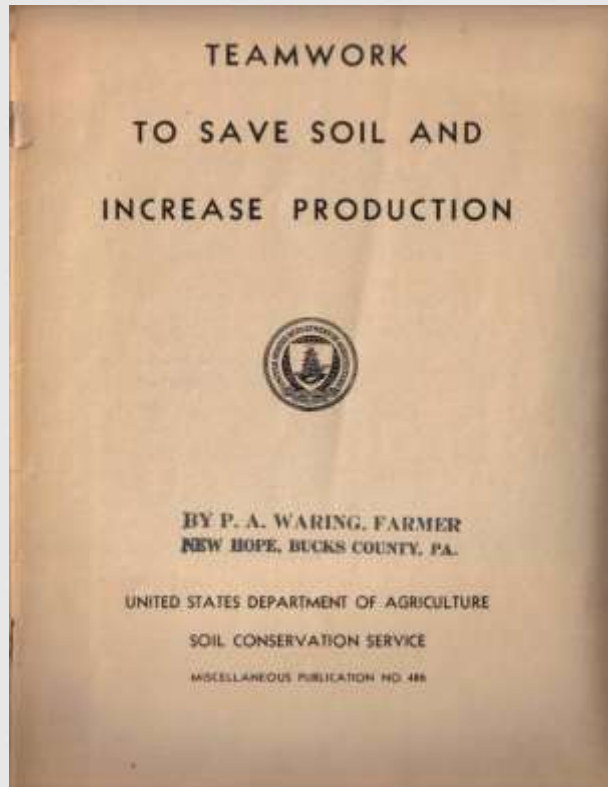




# Erosion Problems



# Solving the Problem





# Implementing the Plan



Pa 40832 - John P. Jones & James Iden Smith  
New Hope, RFD, Pa. (farm)  
Terrace Construction. 1940 or 1942

# Implementing the Plan





# Horse power to horsepower

---







# A vision for the watershed



1941







# Acknowledging Success



It was as magnificent a fall day as one could wish for on the day the Vice President , a good walker and outdoor man, came to visit...He chose not to be driven.

“How can one see your woods and farm lands, and stream areas from a car? You cannot really work at conservation of soil and water except in this fashion.”



Vice President Henry A. Wallace Visits  
Honey Hollow 1944



# Vice President Wallace



# October 13, 1940 Philadelphia Inquirer



## Holding the Soil at Honey Hollow

The paper "Honey Hollow" has a woman named Sue who runs the creek and the land. She has a house and a garden. She has a house and a garden. She has a house and a garden.

**Backs**—daughter of R. A. Whiting, a Bucks County backhoe of farming goods. Sue has a house and a garden. She has a house and a garden.



The Farm: An aerial view of R. A. Whiting's Honey Hollow. Note the varying fields which follow terraces. Some rough ground is a separate system of water.

**Continuing**—The woman named Sue who runs the creek and the land. She has a house and a garden. She has a house and a garden.

**Native-Wide**—The woman named Sue who runs the creek and the land. She has a house and a garden. She has a house and a garden.

**Another**—The woman named Sue who runs the creek and the land. She has a house and a garden. She has a house and a garden.



Another Farmer: Walter Dickey of Bucks County. He is the owner of the farm shown in the picture.

**The Farmer**—The woman named Sue who runs the creek and the land. She has a house and a garden. She has a house and a garden.

**Working**—The woman named Sue who runs the creek and the land. She has a house and a garden. She has a house and a garden.

**The Farmer's**—The woman named Sue who runs the creek and the land. She has a house and a garden. She has a house and a garden.

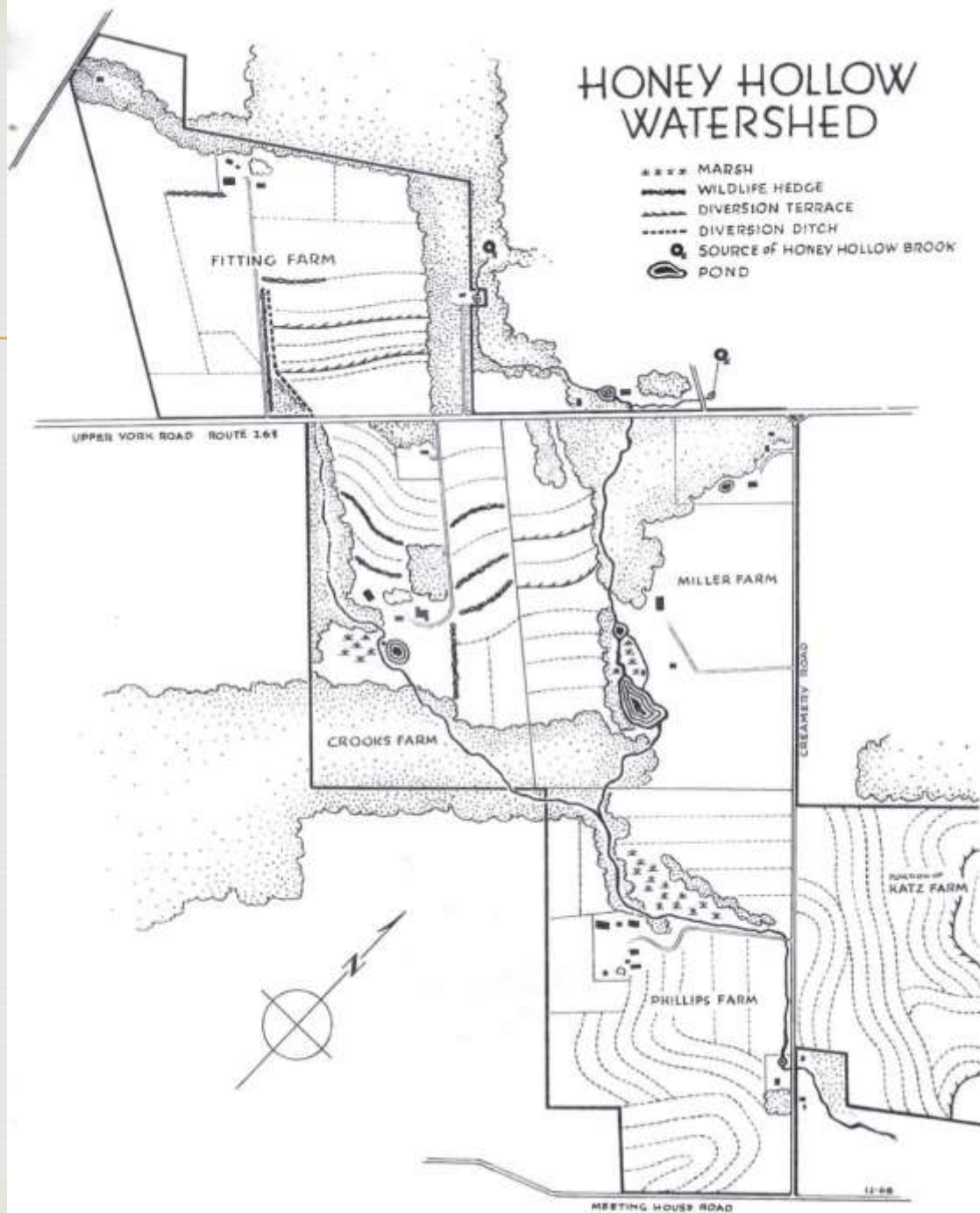
**Working**—The woman named Sue who runs the creek and the land. She has a house and a garden. She has a house and a garden.



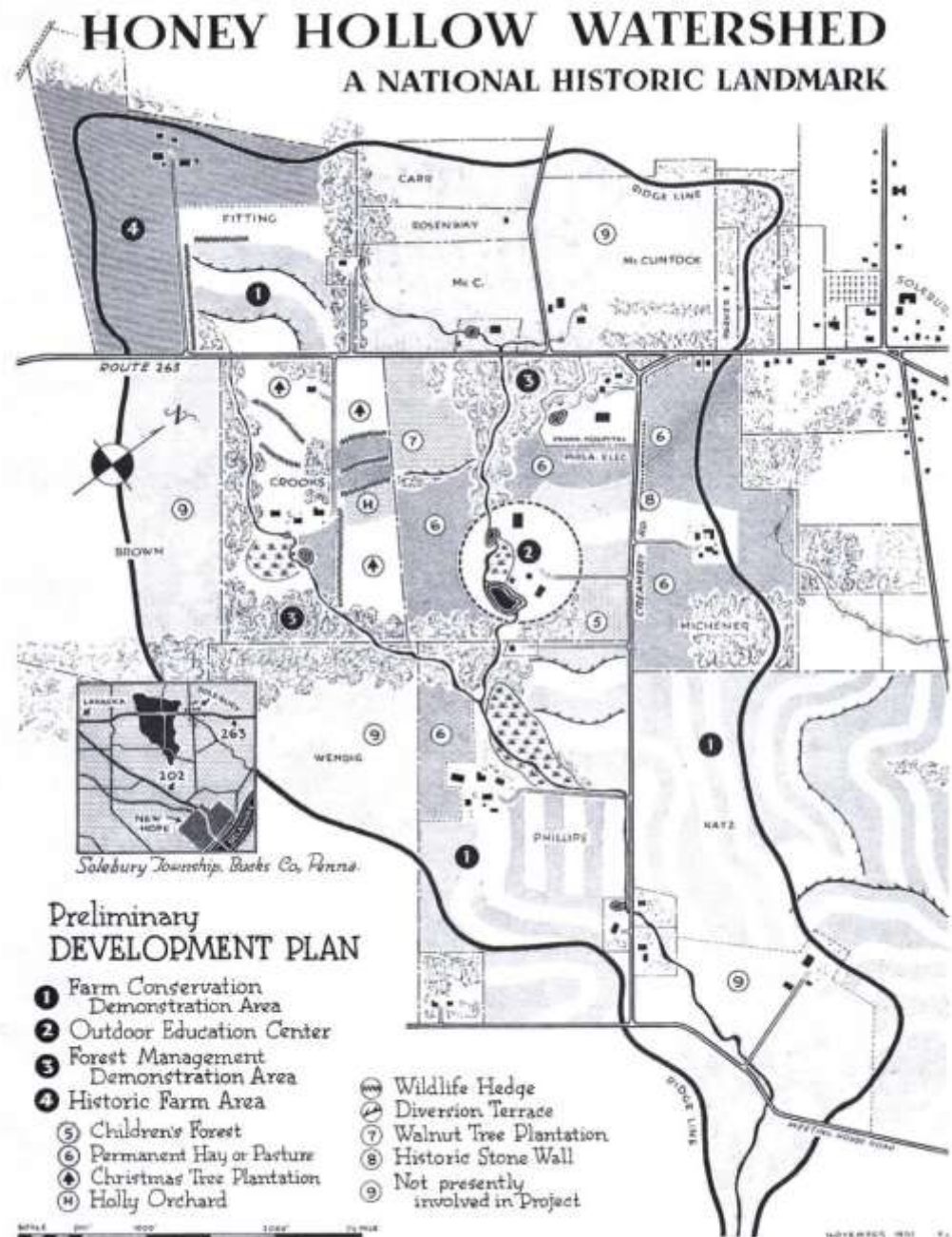
# Honey Hollow Watershed

---

## Map 1968



# National Historic Landmark Map 1970





# Acknowledging History



On October 12, 1969 a ceremony was held to dedicate the Honey Hollow Watershed as a NHL.

Speakers included representatives of the PHMC, National Audubon Society, Bucks County Conservancy and Congressman Edward G. Biester.

*Here we find not an area pristine, but land as man has touched it and touched it well, touched it with feeling, touched it without debasing it.*

# Acknowledging History

---





# Progress at the cost of historic resources













# Gentrification of the Farm Community

---

## “FELICITY FARMS” IN SOLEBURY TOWNSHIP BUCKS COUNTY, PENNSYLVANIA

“FELICITY FARMS” has much to offer one owner — or several owners — in beauty, stability and value. Four splendid farms . . . three of which are separate residential-farm units . . . are merged into a 390-acre farm with residences, barns, implement sheds, granary, corn cribs, well-watered pastures and ample arable fields to carry 125 head of cattle. Residential units include a total of 57 rooms with 25 master bedrooms; 10 baths and 12 servants’ rooms; 5 baths.

So many superlative features form an integral part of “Felicity Farms” that a descriptive outline sounds more imaginary than actual. Brochure pictures, maps and text, however, leave no shadow of doubt as to the unique completeness of this extraordinary place.

# "FELICITY FARMS"

"FELICITY FARMS" is located in Solebury Township, 5 miles from New Hope. 2 hours travel time from New York by motor; or by train, via Trenon, N. J.

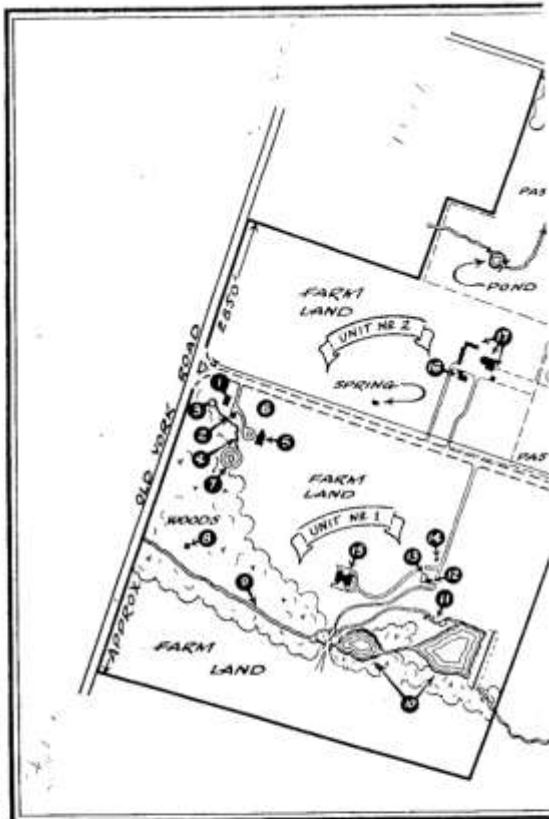
## FACTS

### RESIDENTIAL-FARM ☆ UNIT No. 1

1. Three-car stone garage with 5-room-and-2-bulk apartment, laundry, bath.
2. Two-car stone garage.
3. Reservoir—28,000 gal. Supplies buildings in Group Nos. 1 and 2.
4. Boulder stone look—overflow from reservoir—feeds into swimming pool.
5. MAJOR RESIDENCE: Thirteen rooms and six baths, completed 1942. Fireproof, helistone exterior; stream beam construction; hand split shingle roof; fully insulated. Brass plumbing, copper leaders, gutters, screens. Random-width oak and pine floors—hand finished and polished. Hot water heating system from oil-fired unit, concealed radiation. Booster pump and pressure tank on water system. Fully-equipped quick freeze room, laundry in basement. Drainage—two septic tanks with lateral tile run.
6. HOUSEHOLD ORCHARD: Choice variety of cherry, apple, peach, and plum.
7. BARBEQUE PLAZA: On edge of swimming pool, paved in flagstone, protected by curved retaining wall.
8. SWIMMING POOL: 150' x 250'; oval, 4' to 9' deep; lined with sheet steel, ice proof. 1,000,000 gal. capacity.
9. Pressure pump to fill swimming pool and spring.
10. Stream of pure water—Honey Hollow Brook.
11. Swimming Lakes stocked with game fish.
12. Steel-lined water flume—masonry proof—feeds over shot water wheel in stone pump house. Supplies reservoir from spring.
13. KUMPUH HOUSE: 2-story; stone with large open fireplace, dance floor, lavatory, dressing rooms on 1st floor; second floor storage.
14. Tennis court.
15. Transformer House with 20,000 volt power transformer. Underground power lines, 11 pair cable telephone lines, 6" water main.
16. HAY BARN AND GRANARY: Old helistone construction; 4 granary sections; 3,000 bushels of grain; hay mow.

### RESIDENTIAL-FARM ☆ UNIT No. 2

16. GENTLEMAN'S RESIDENCE (Group No. 2)—8 ROOMS (3 bedrooms, 1 bath, servants' rooms and bath). Hot water heating system, coal-fired heating system, coal-fired Spencer boiler, concealed radiation, separate coal-fired domestic hot water heater. Copper screens, leaders, gutters. Connected with underground service main.
17. ANTIQUE-PAVED COURT surrounded by L-shaped Implement Shed; 2-car garage; repair shop. STONE AND FRAME BARN: 4 box stalls; 6 stalls; attached CALF BARN AND BULL PEN. DOUBLE CORN CILB on closing Implement Shed.



18. PIG STY: Frame, capacity 25 sows. IMPLEMENT SHED

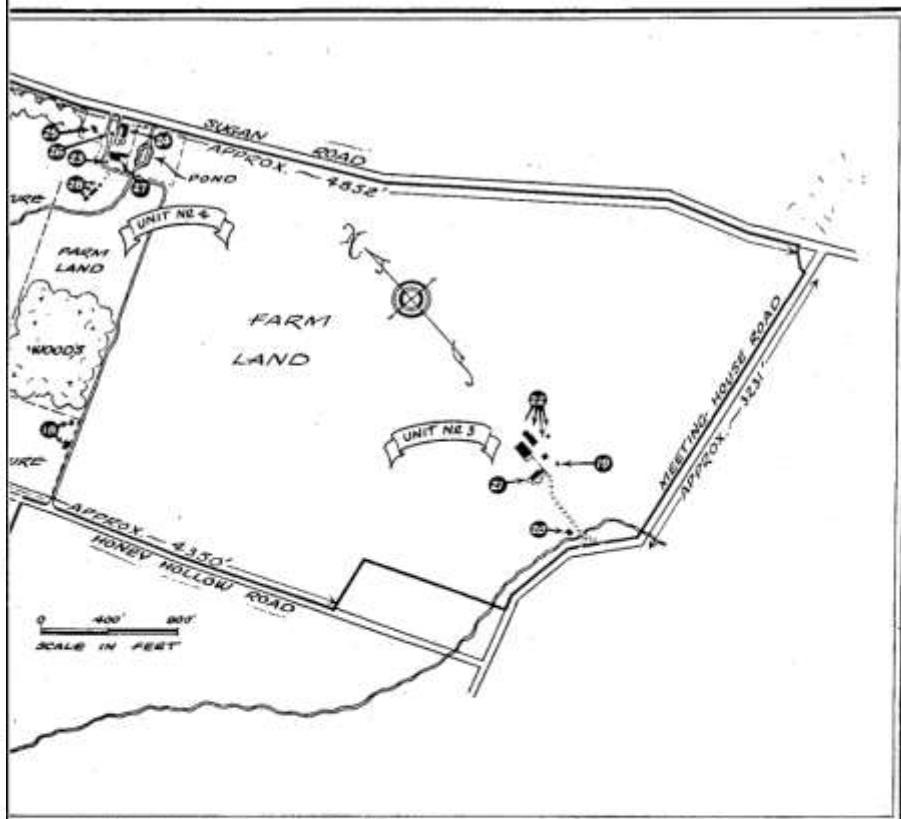
### RESIDENTIAL-FARM ☆ UNIT No. 3

19. Spring House and spring—excellent water.
20. Water Wheel House, pumps water supply for group.
21. GENTLEMAN'S RESIDENCE (Group No. 3)—10 ROOMS (7 bedrooms, 2 baths). White plaster over stone, completely remodeled. Copper plumbing, leaders, gutters, screens. Oil-burning Mathercraft unit for hot water heat; electric unit for domestic hot water.
22. FURN-STUBBY BARN: Stone and frame—75' x 120'. Tiled side, 2 lower floors of poured concrete construction; concrete pillars, beams and floors; equipped for

young cattle or steers. On ground level; also office and bath apartment on 2d floor; well ventilated by non-Jamesway DAIRY BARN—steel beams, overlaid by modern equipment. 12-1/2 milk room. FRAME LINES

### THE FARM GROUP

23. STABLE HOUSE with electric group.



and implement shed on 1st floor. Four-room-tennis, 3rd and 4th floors—Attached 35' x 70' new concrete block construction, insulation and complete floors, 5 box stalls, modern HOUSE.

### ☆ UNIT No. 4

pump, furnishes water to

24. RESIDENCE (Group No. 4)—10 ROOMS (7 bedrooms, 2 baths). White plaster over masonry built in 1828; remodeled 1936. Slate roof; copper leaders; gutters; screens; pine floors. Coal-fired National Radiator unit; hot water heat. Sapon Electric water heater. P.S. electricity.
25. COTTAGE: Two story; stone and frame. Well remodeled; hot water heat from Spencer coal boiler. Separate domestic coal unit for domestic hot water. Slate roof. Rockwool insulation. Hand-wrought hardware.
26. GARAGE: Detached; frame with space for four cars.
27. CATTLE BARN: Frame and stone; slate roof; electricity; running water. 14' silo; 2 large open feeding rooms; 54' x 20' cattle shelter; granary; balot hay storage.

28. CHICKEN HOUSE: Frame; 1,000 bird cap. Jamesway equipment—heat, water, electricity.

### THE SPLIT CHRISTNUT POST AND RAIL FENCES ENCLOSE—

- 272 ACRES fertile fields, built up and maintained by use of farm for dairy herd.
- 63 ACRES of pasture.
- 25 ACRES in residential landscaped grounds.
- 30 ACRES of prime woodland.
- 300 ACRES ready to improve as 125 head dairy or stock farm.



# Felicity Farms



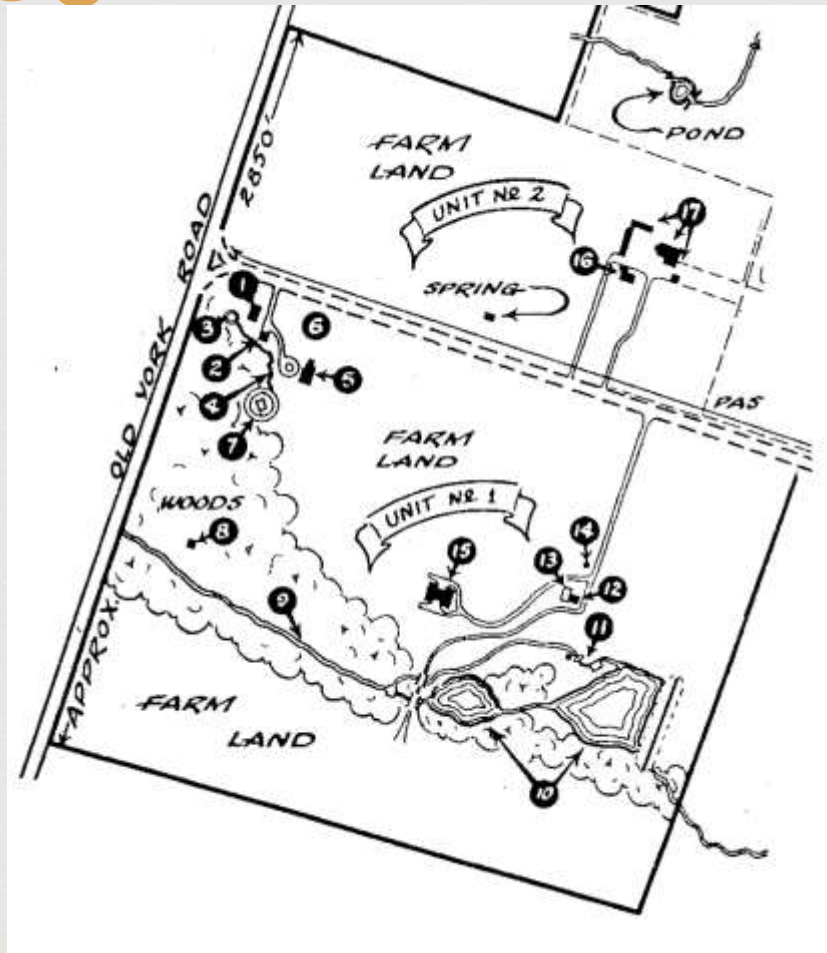
Felicity Farms substantiates an expenditure of \$900,000 for an assemblage of three gentleman's farms, comprising 390 acres with

- ❧ Ample fields to maintain 125 head of cattle
- ❧ 5 residences
- ❧ 16 farm and utility buildings
- ❧ A rumpus house and tennis court
- ❧ 3 ponds
- ❧ A Hollywood-type play terrace with swimming pool and outdoor grill

## RESIDENTIAL FARM ☆ UNIT No. 1

1. Three-car stone garage with 5-room-and-2-bath apartment, lavatory, laundry.
2. Two-car stone garage.
3. Reservoir — 28,000 gal. Supplies buildings in Groups Nos. 1 and 2.
4. Boulder strewn brook — overflow from reservoir — feeds into swimming pool.
5. **MANOR RESIDENCE:** Thirteen rooms and six baths; completed 1942. Fireproof; fieldstone exterior; steam beam construction; hand split shingle roof; fully insulated. Brass plumbing; copper leaders, gutters, screens. Random-width oak and pine floors — hand fitted, pegged and polished. Hot water heating system from oil-fired unit; concealed radiation. Booster pump and pressure tank on water system. Fully-equipped quick freeze room; laundry in basement. Drainage — two septic tanks with lateral tile run.
6. **HOUSEHOLD ORCHARD:** Choice variety of cherry; apple; peach; and plum.
7. **BARBECUE PLAZA:** On edge of swimming pool, paved in flagstone, protected by curved retaining wall.  
**SWIMMING POOL:** 150' x 250'; oval; 4' to 9' deep; lined with sheet steel. Ice proof. 1,000,000 gal. capacity.
8. Pressure pump to fill swimming pool and spring.
9. Stream of pure water — Honey Hollow Brook.
10. Swimming Lakes stocked with game fish.
11. Steel-lined water flume — muskrat proof — feeds over shot water wheel in stone pump house. Supplies reservoir from spring.
12. **RUMPUS HOUSE:** 2-story; stone with large open fireplace; dance floor; lavatory; dressing rooms on 1st floor; second floor storage.
13. Tennis court.
14. **Transformer House** with 20,000 volt power transformer. Underground power lines, 11 pair cable telephone lines, 6" water mains.
15. **HAY BARN AND GRANARY:** Old fieldstone construction; 4 granary sections; 3,000 bushels of grain; hay mow.

# BCAS & adjoining property detail





# Felicity Farms

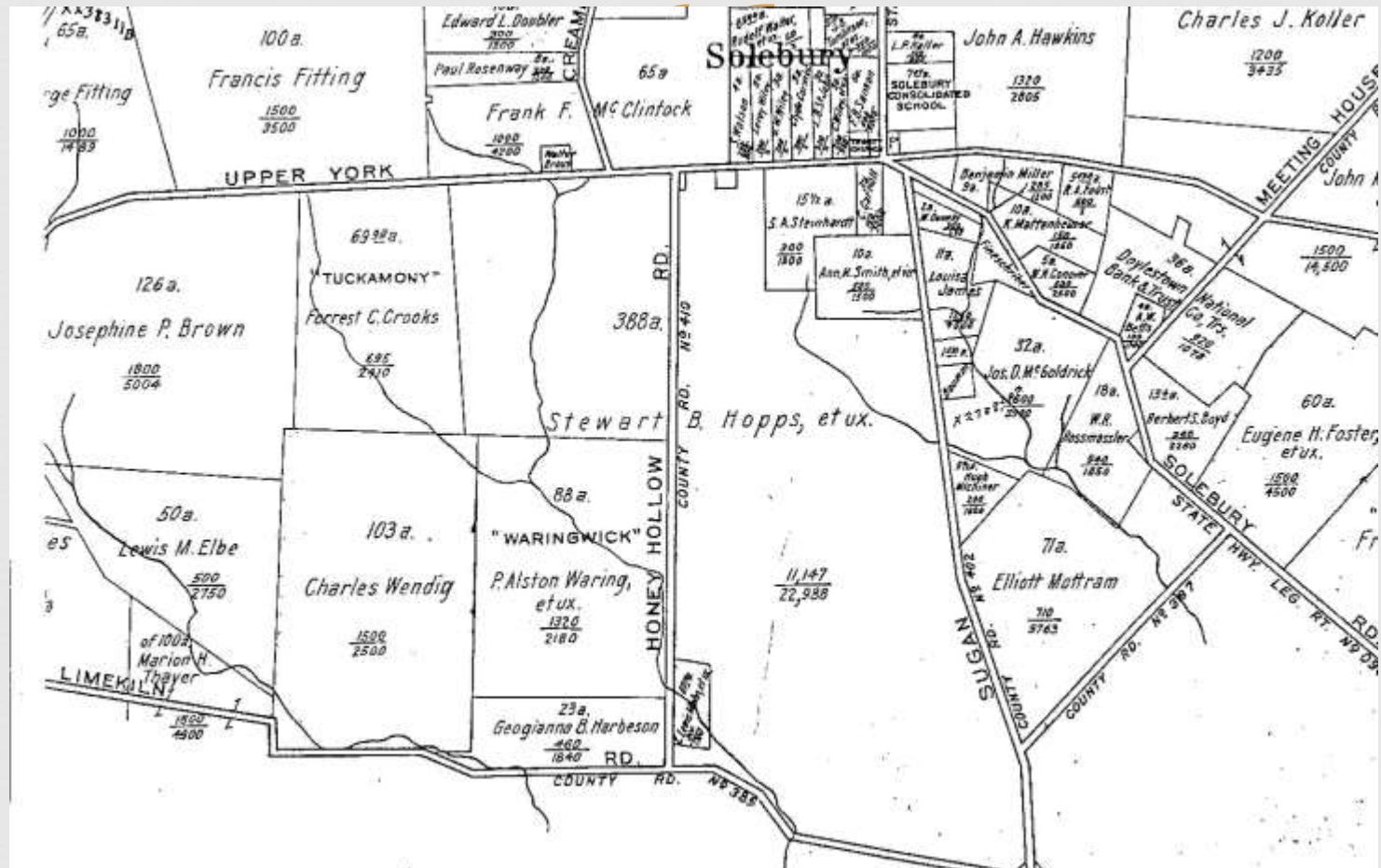


---

PRICE \$400,000  
(For Entire Property)

\*Full Commission to Selling Broker

# 1948 Property Map



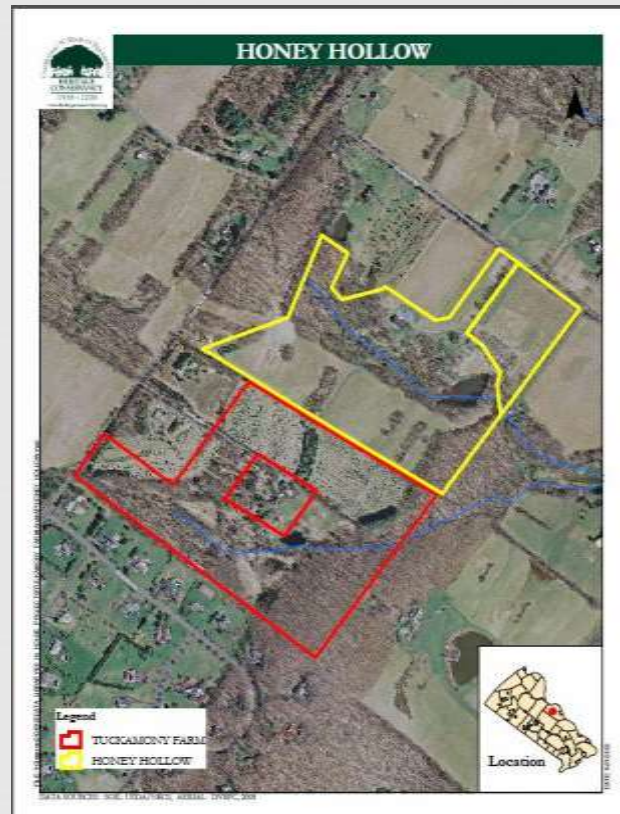


# Preservation



Tuckamony Farm

1980 and 1988  
Deeds of Gift



PECO

1994

Conservation  
Easements &

Fee Simple

# The Struggle to Save the Landmark



- ❧ In 1967 the Philadelphia Electric Company announced plans for a 300-foot right of way for two transmission lines which would pass directly through the heart of the watershed.
- ❧
- ❧ Almost simultaneously the Pennsylvania Department of Highways unveiled a proposal to run a four-lane expressway through the county which also was programmed to go through the center of the watershed.



# The Struggle to Save the Landmark



- ❧ On April 8, 1969, Honey Hollow was placed on the National Register. On August 4, 1969, the Honey Hollow watershed had been given the status of a National Historic Landmark.
- ❧ On April 19, 1970 Honey Hollow took a major step in organizing itself. First, it reconstructed its Board of Directors and second, the Association agreed to ask the Bucks County Conservancy to act for it in all matters relating to finance through a special committee.

Time to celebrate, recognize and honor  
special people and a special place



☞ Crooks family

☞ Waring family