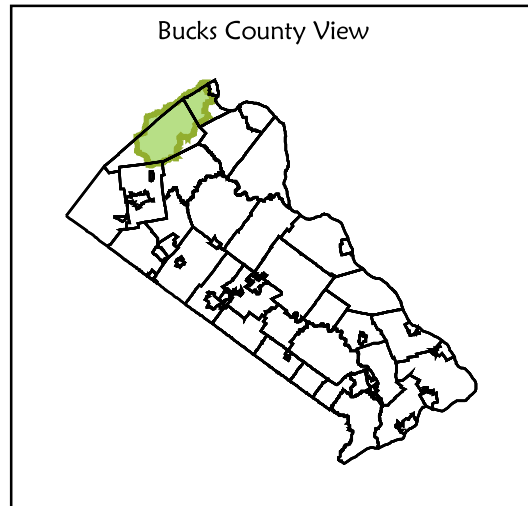
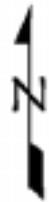
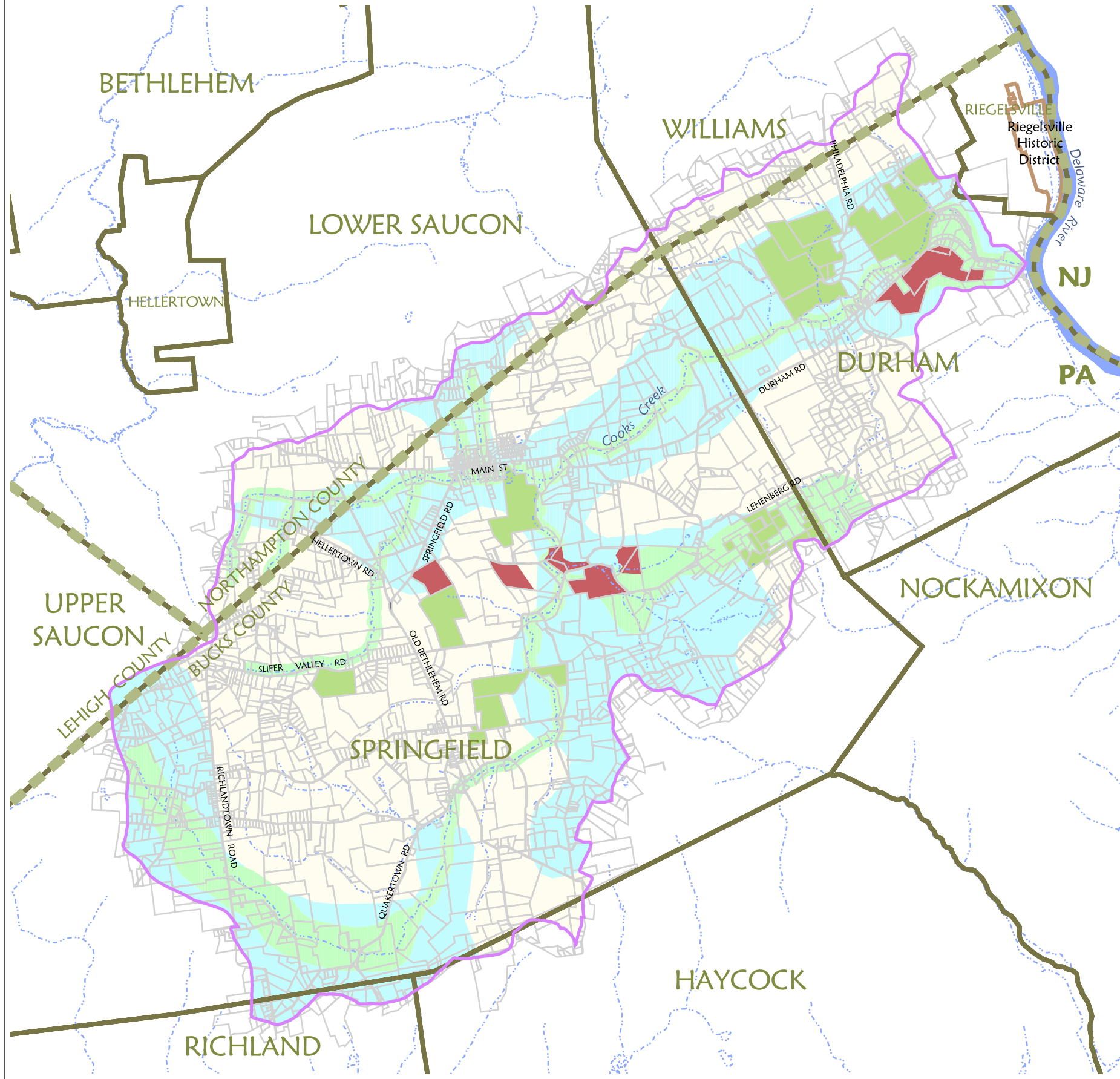


Cooks Creek Watershed
Bucks & Northampton Counties, PA

- First Priority Area (2985 acres)
- Second Priority Area (6590 acres)
- Heritage Conservancy Preserved Land
- Other Preserved Land
- Parcel Boundary
- National Register Historic District
- Cooks Creek Watershed
- Open Water
- Road
- County Boundary
- Municipal Boundary
- Streams



January 2005



The watershed is home to forested hills and vast farm lands

The Cooks Creek Watershed

.....encompasses 30.5 square miles, approximately 19,000 acres, and supports naturally reproducing trout. It has been listed as a first priority site in the Bucks County Natural Areas Inventory (NAI) and has been recognized by the Pennsylvania Fish and Boat Commission as the only viable coldwater fishery in Bucks County. The watershed is composed of steep forested ridges, deep spring-fed ravines, and a wide fertile limestone valley, containing prime farmland which is still in production and is an important agricultural resource in the state.

Knecht's Bridge is one of many historic structures you can visit while traveling across the watershed

